

October 27, 2023

# D405 Sample Depth Images

John Sweetser

RealSense

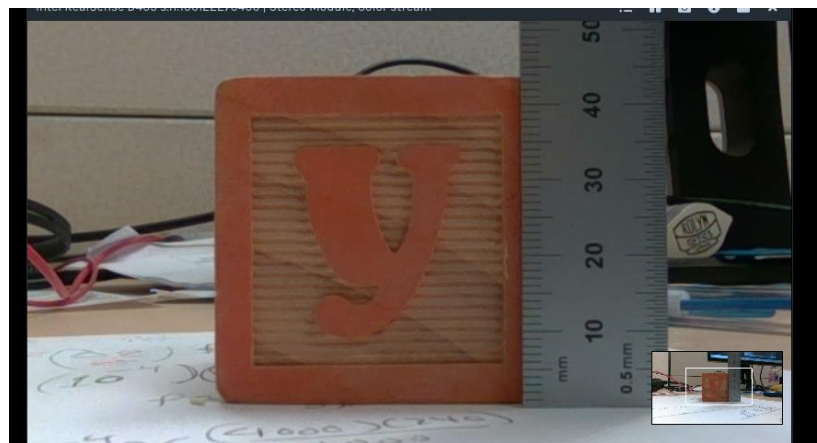


intel®

# D405 Depth Image Capture Setup



D405 placed ~100mm from wood block test object



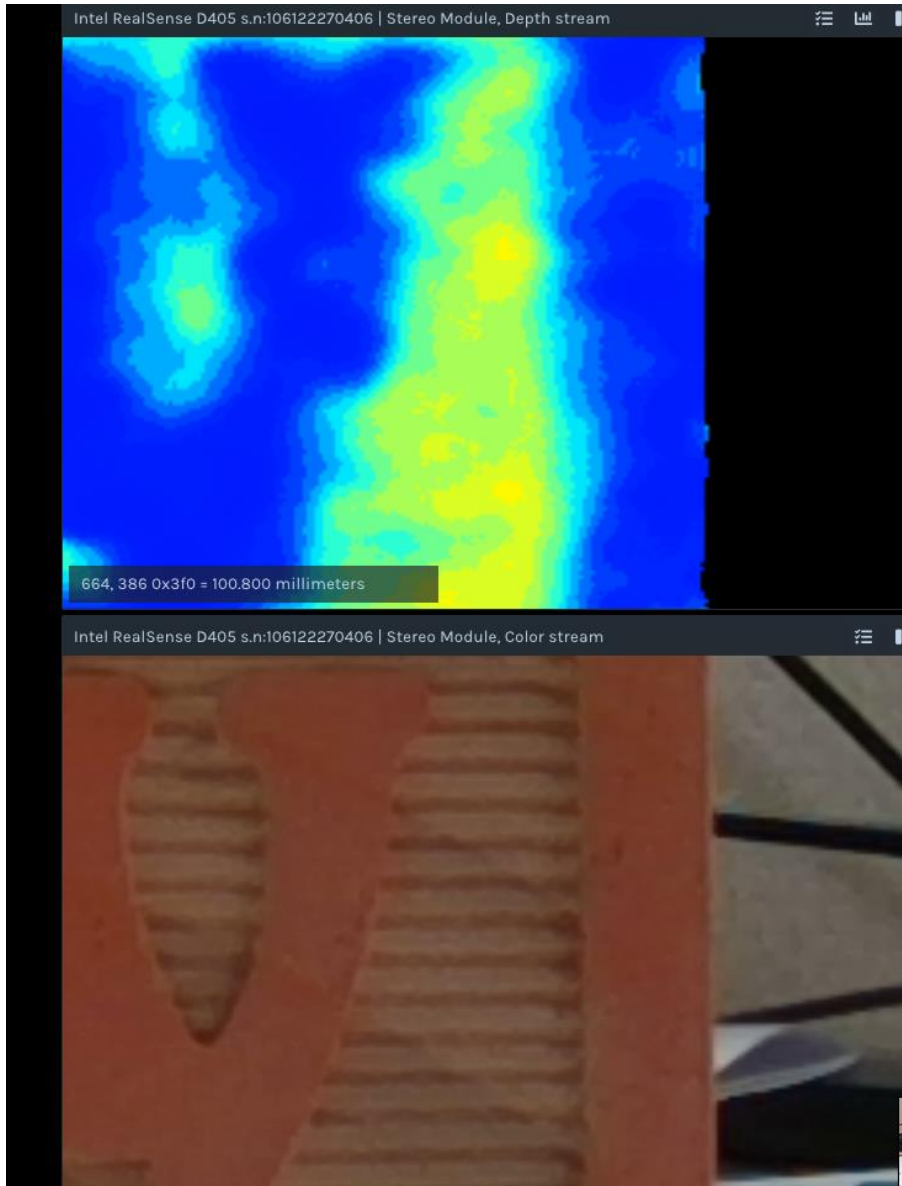
Wood block is ~40mm cube with surface features carved into each face  
"Y" has height of  $\sim 1.0 \pm 0.2$  mm above ridged surface. Ridges are spaced by  $\sim 1$  mm and are  $< 0.2$  mm high

# D405 Depth Image Sample



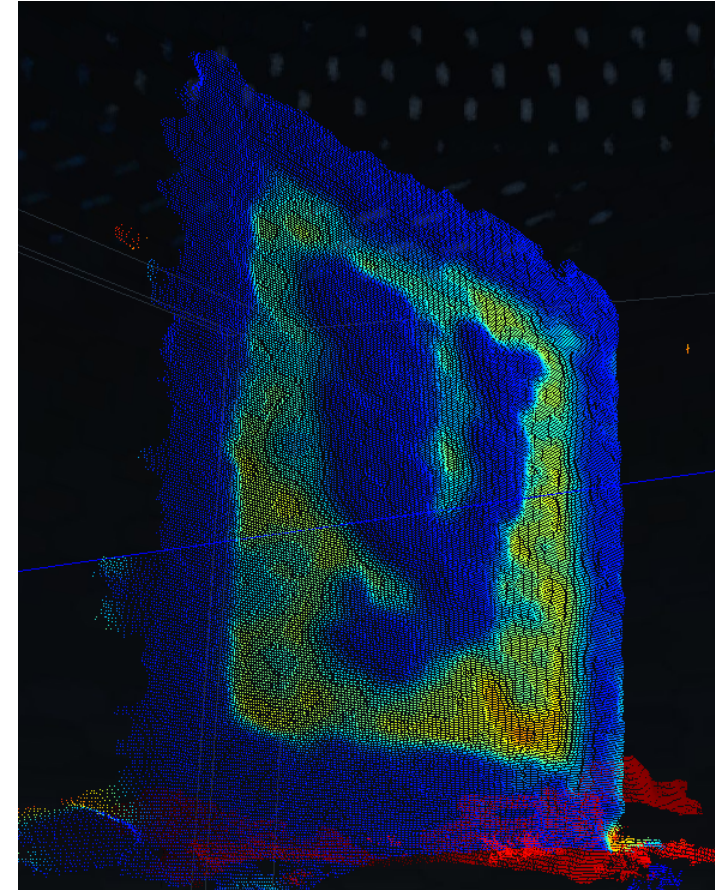
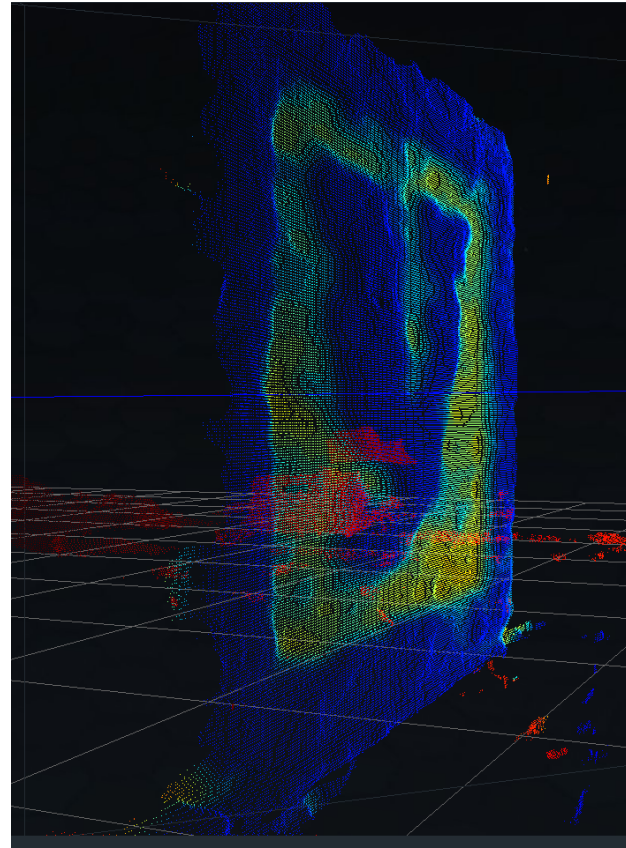
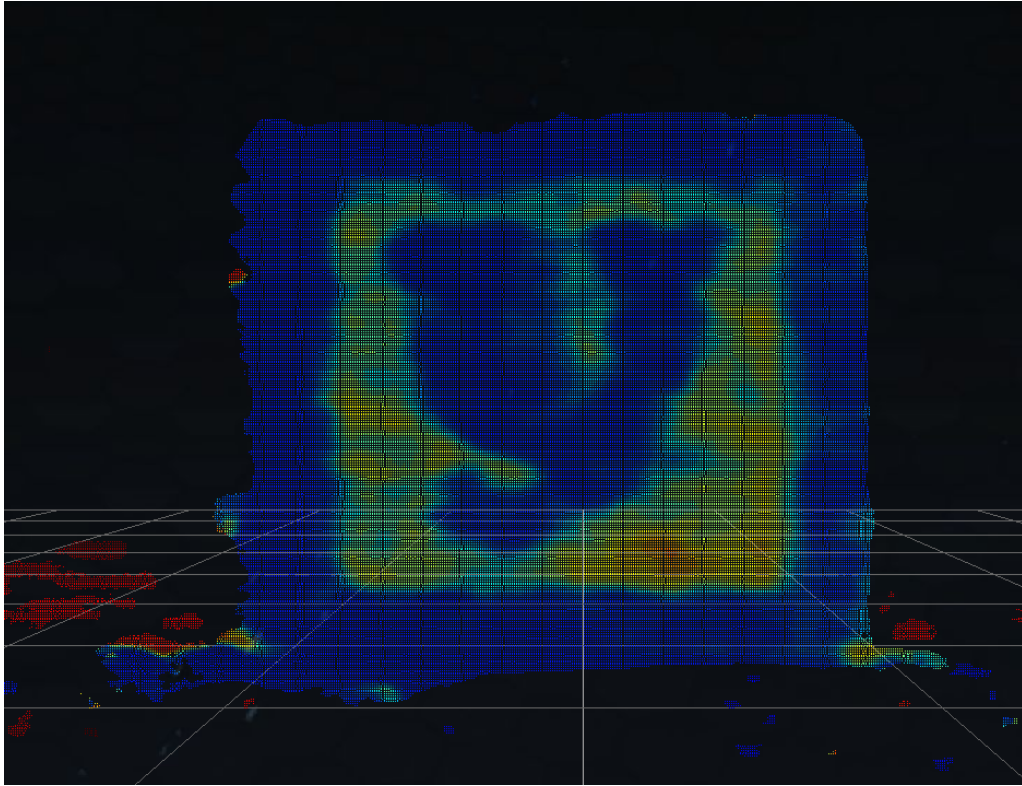
Depth (top) and corresponding RGB (bottom) images of wood block. Default depth settings and HD resolution used. Moderate temporal filtering is applied to improve image quality. The  $\sim 1$ mm relief features are resolvable with noise/variation of  $\sim 0.2 - 0.3$ mm. Further improvement may be possible.

# Depth Image – Zoomed In



Enlarged portion of depth and RGB images indicating spatial (x, y) resolution  
Depth edges span ~5 pixels.  
RGB image has 1-2 pixel resolution.  
Each pixel ~0.15mm.

# 3D Point Cloud



3D point cloud images corresponding to depth image. Provides some indication of depth and spatial resolution achievable. Z step size is 0.1mm.