

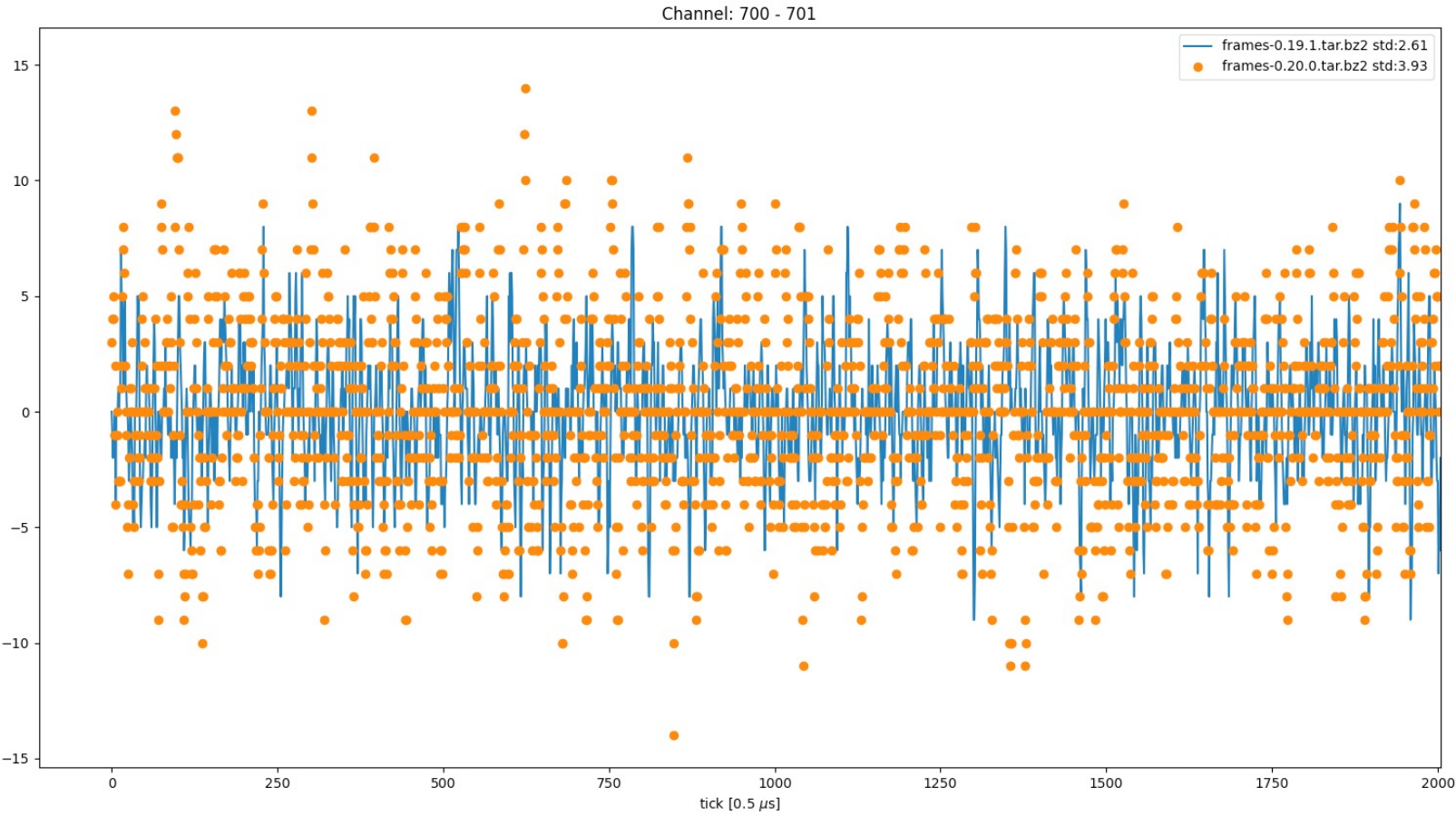
notes

redmine issue from Mike Wang:

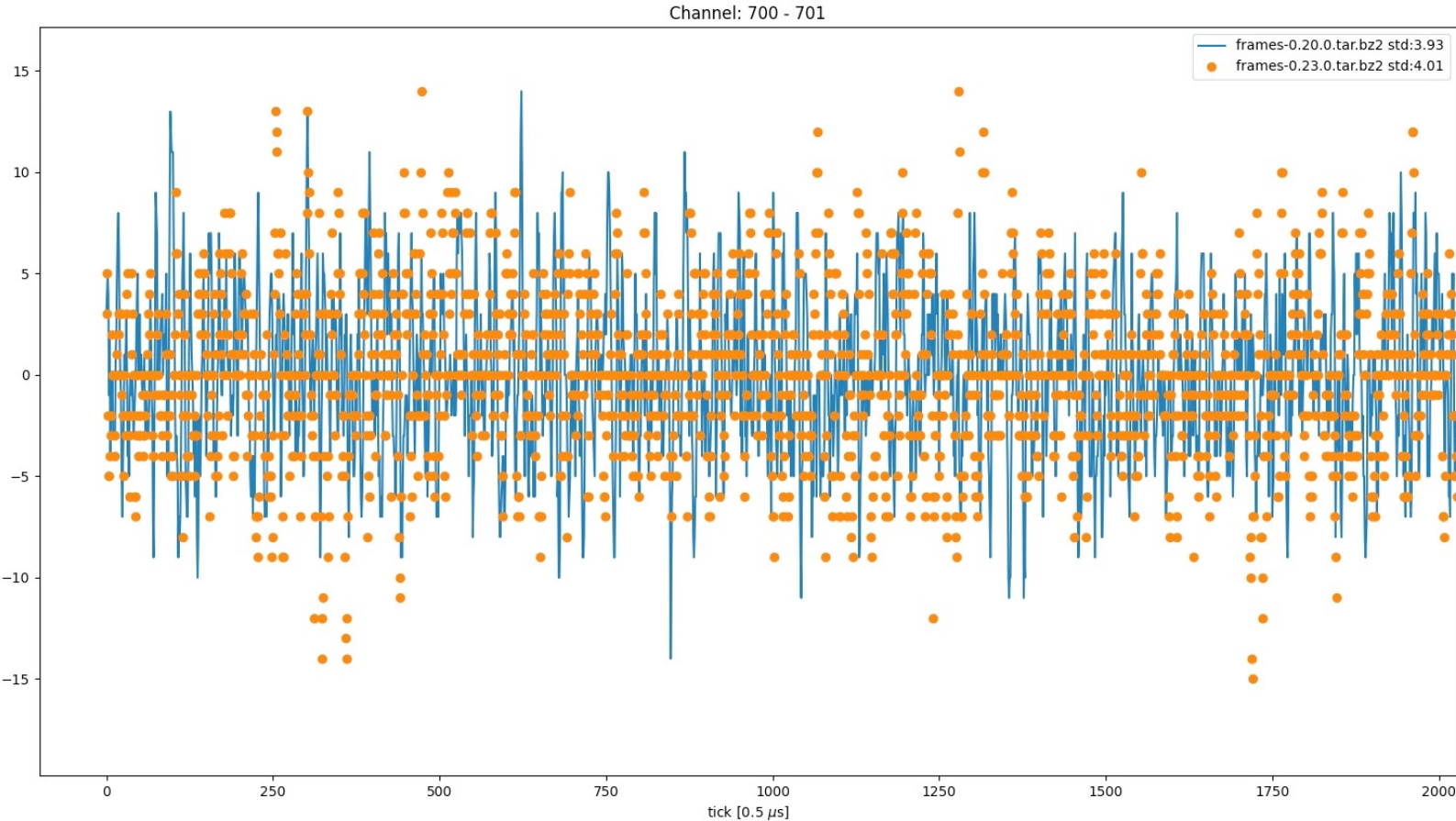
<https://cdcv.sfnal.gov/redmine/issues/27898>

- v0_19_01 (FFT bug): model trained on, 99%
- v0_20_0 (FFT fixing): 11%
- v0_23_0: 0%

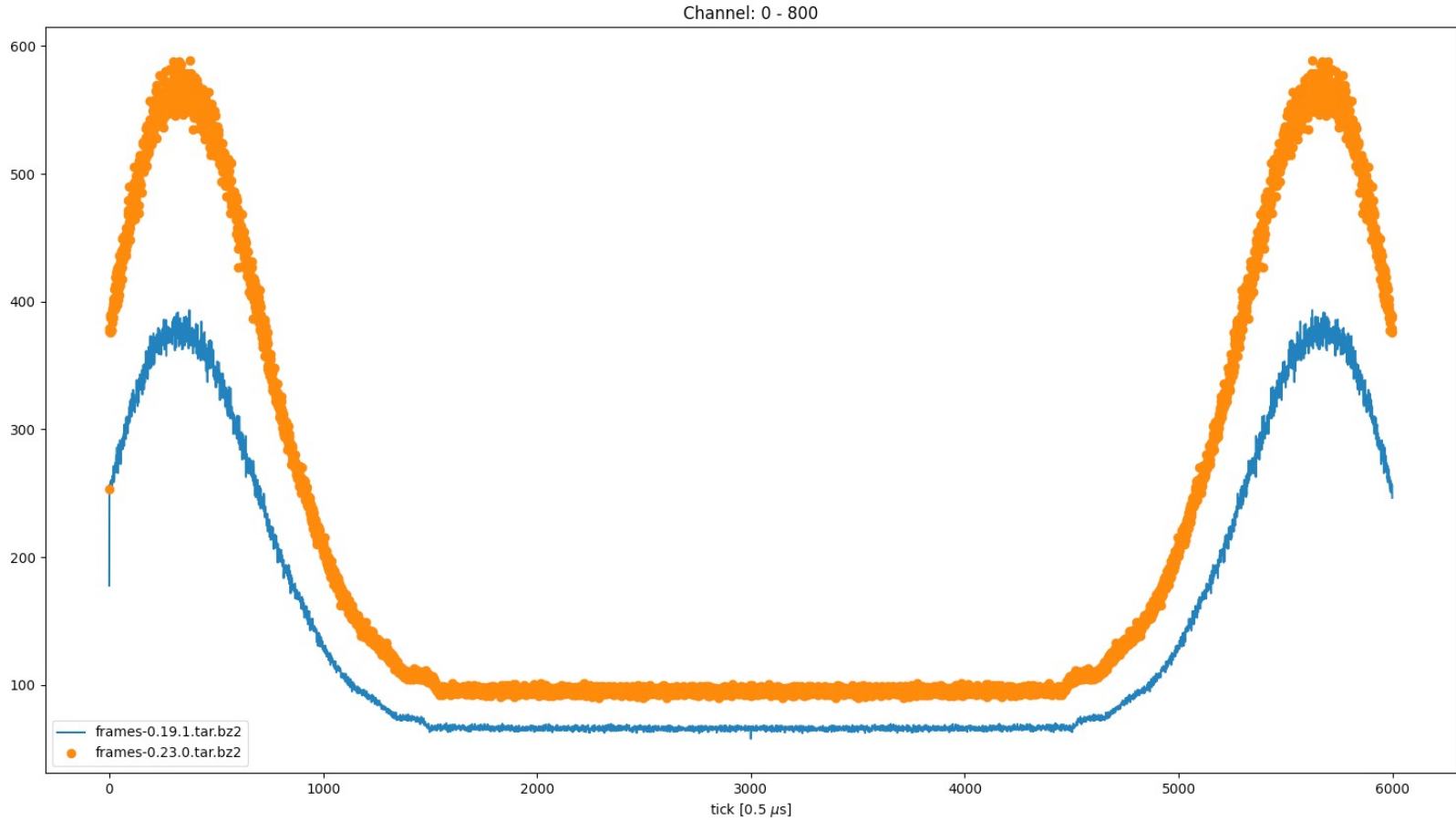
0.19.1 - 0.20.0



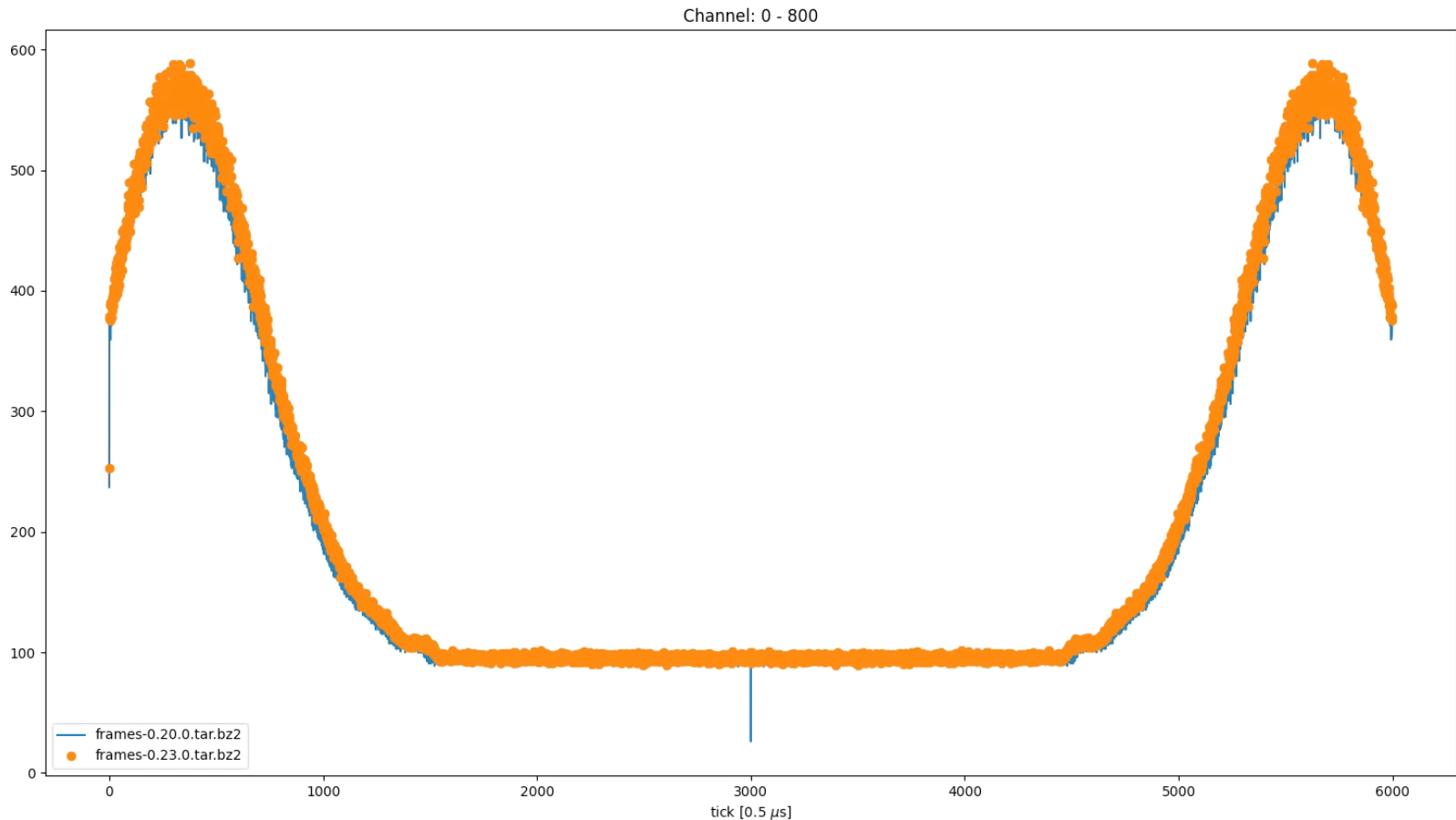
0.20.0 – 0.23.0



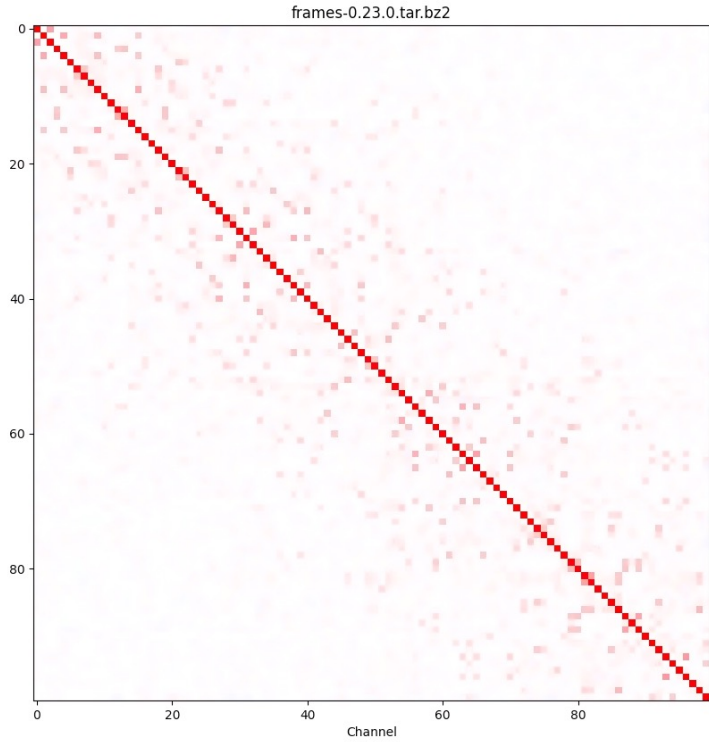
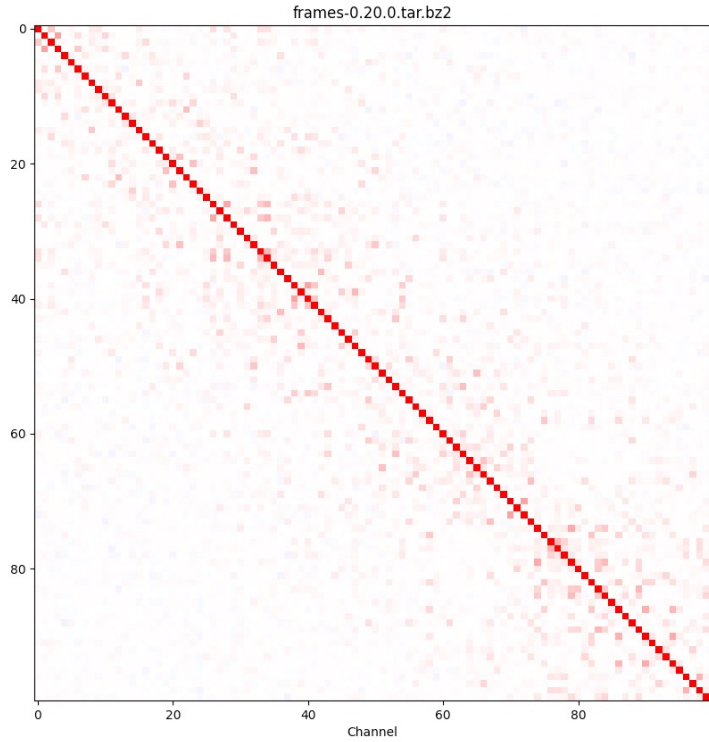
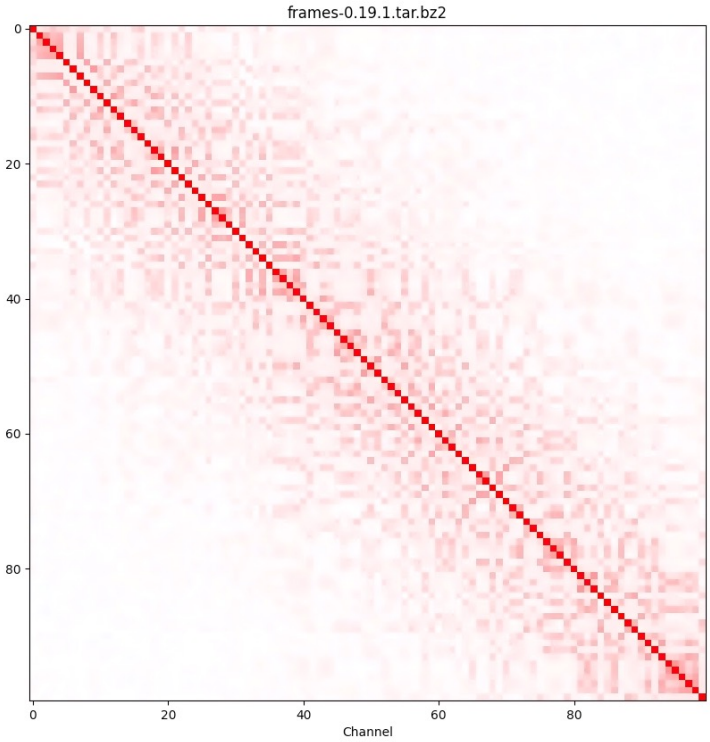
0.19.1 – 0.23.0



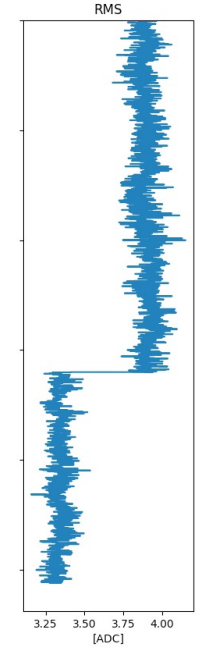
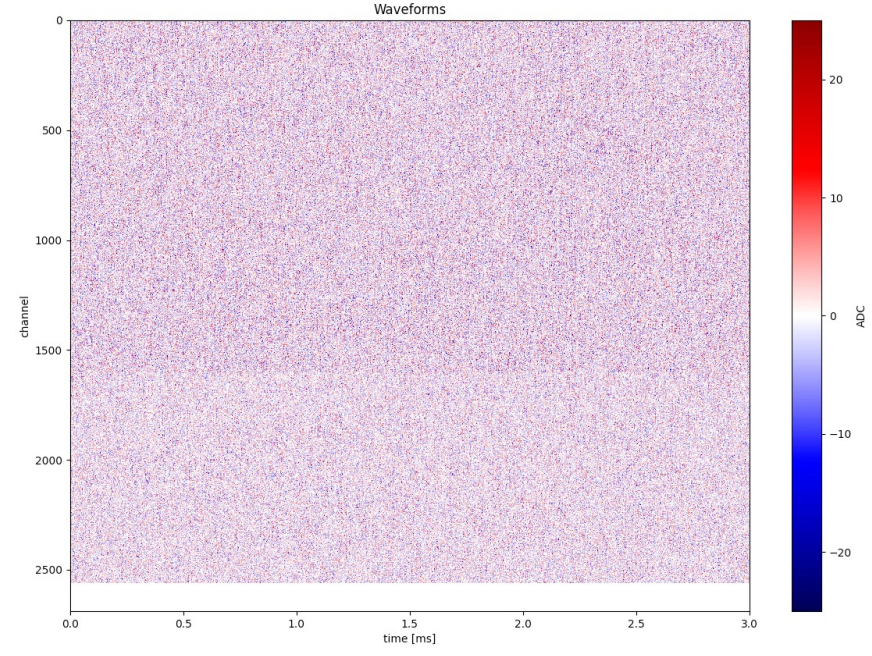
0.20.0 – 0.23.0



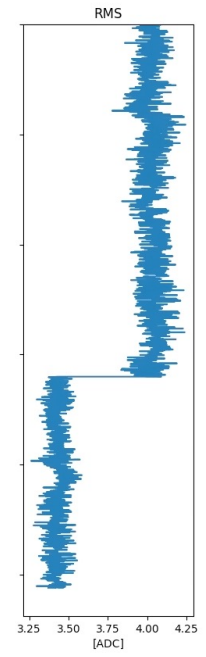
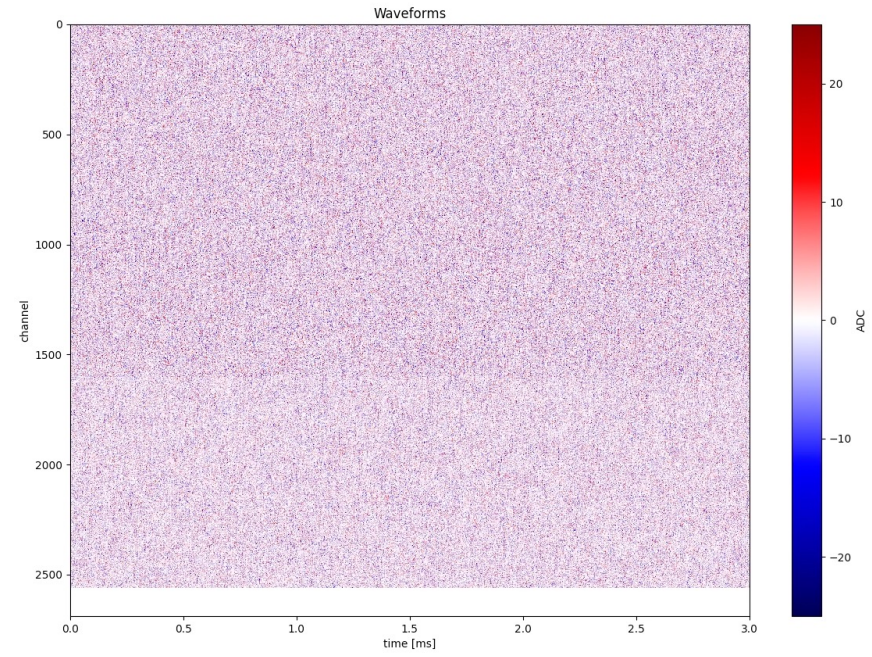
channel correlations



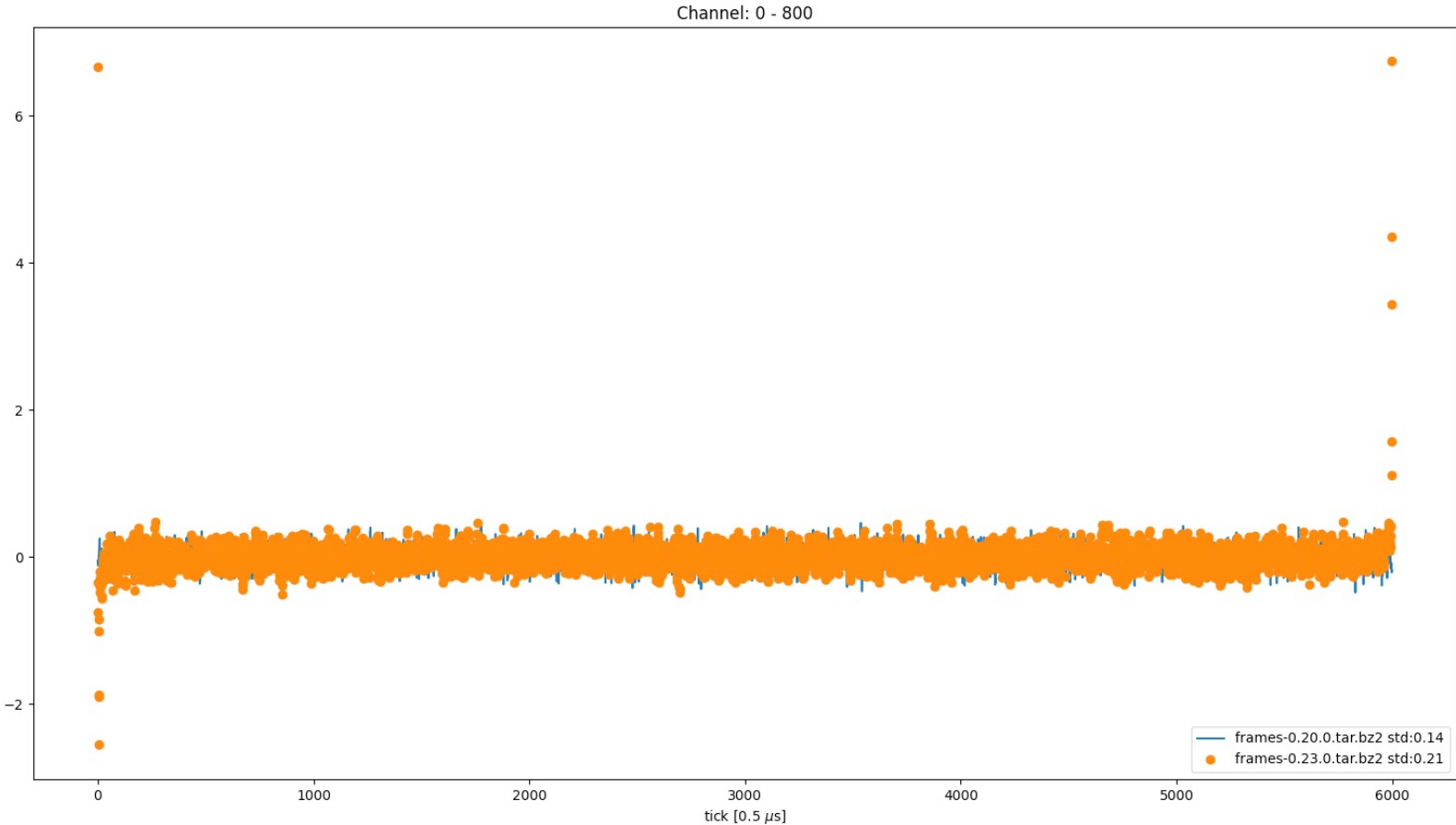
0.20.0



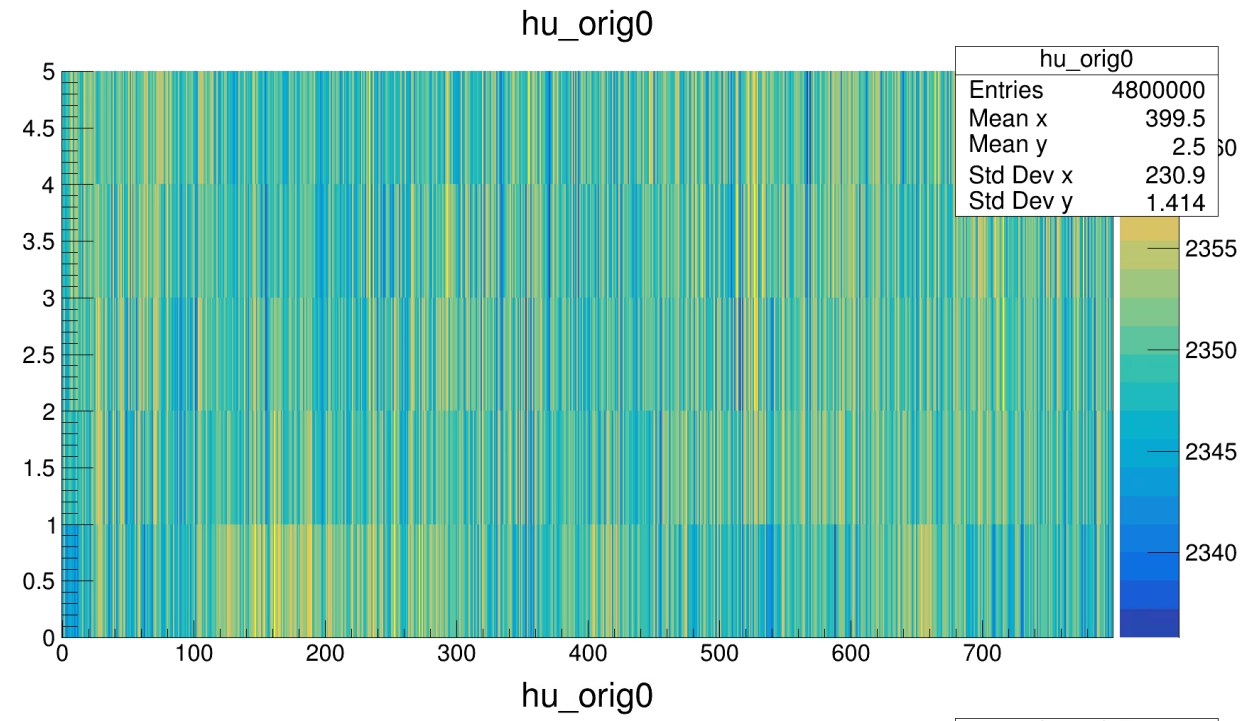
0.23.0



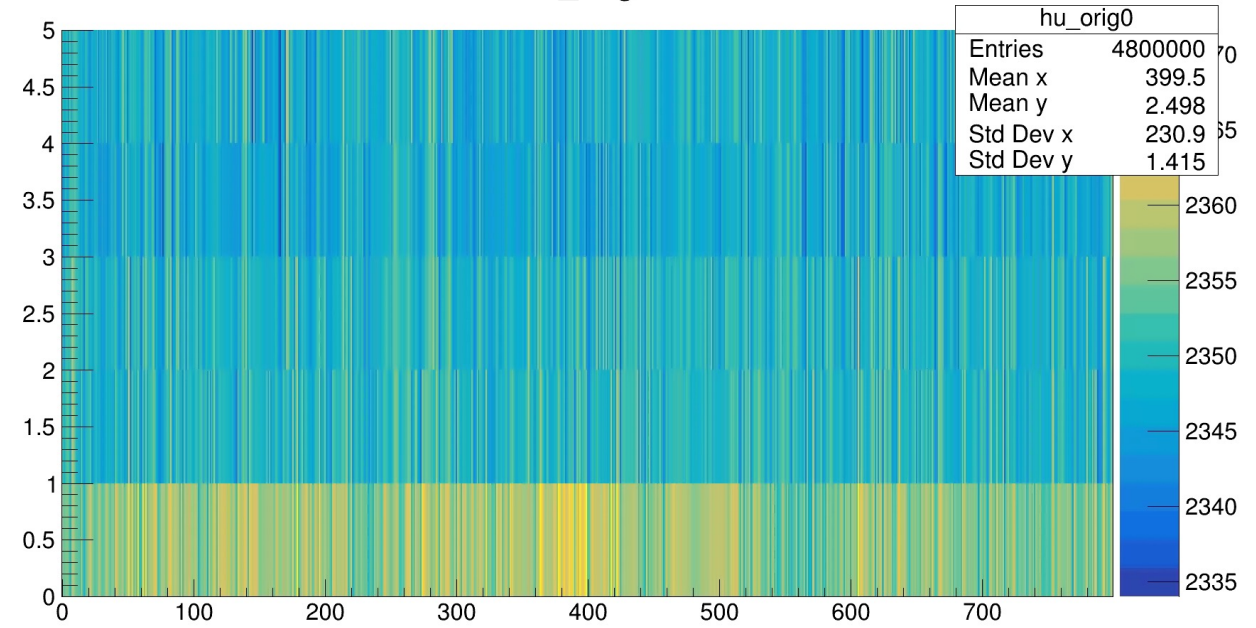
0.20.0 – 0.23.0



0.20.0

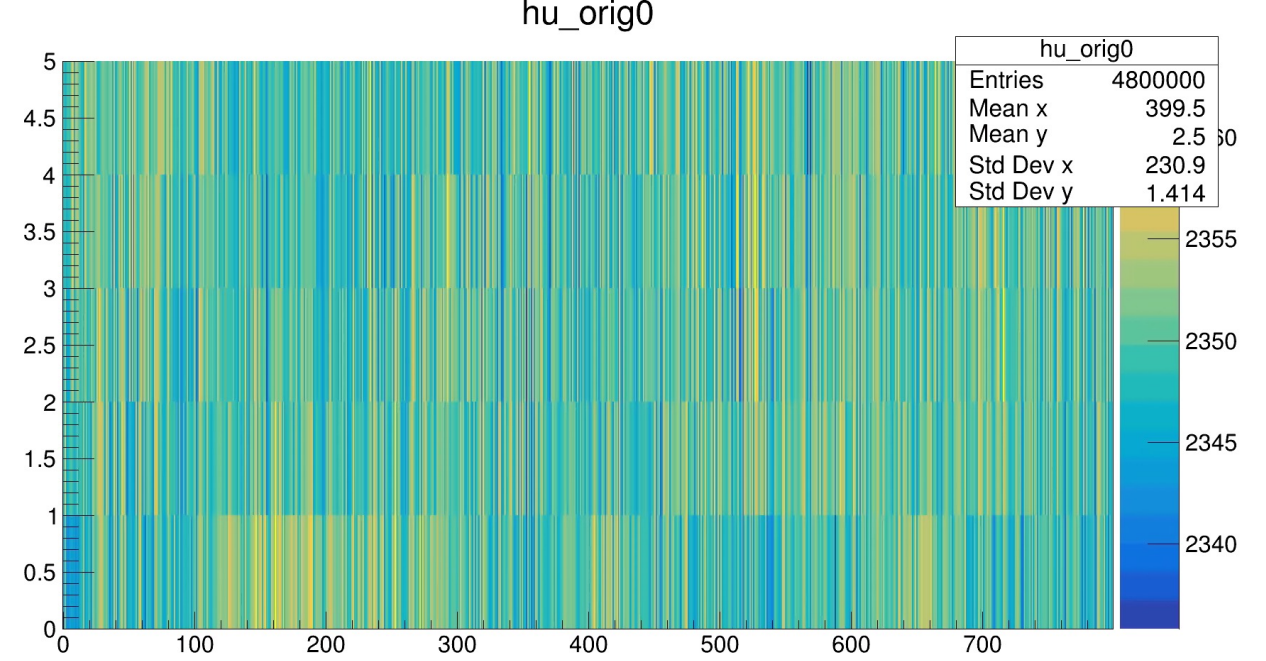


0.23.0



suspecting pr172 is the cause

0.21.0 (pr163)
before pr172



latest master branch (pr198)

