

Connecting to the Internet with Raspberry Pi Pico W

Getting Raspberry Pi Pico W online
with C/C++ or MicroPython

Colophon

Copyright © 2022 Raspberry Pi Ltd

The documentation of the RP2040 microcontroller is licensed under a Creative Commons [Attribution-NoDerivatives 4.0 International](#) (CC BY-ND).

build-date: 2022-11-30

build-version: 3a2defe-clean

About the SDK

Throughout the text "the SDK" refers to our [Raspberry Pi Pico SDK](#). More details about the SDK can be found in the [Raspberry Pi Pico C/C++ SDK](#) book. Source code included in the documentation is Copyright © 2020-2022 Raspberry Pi Ltd (formerly Raspberry Pi (Trading) Ltd.) and licensed under the [3-Clause BSD](#) license.

Legal disclaimer notice

TECHNICAL AND RELIABILITY DATA FOR RASPBERRY PI PRODUCTS (INCLUDING DATASHEETS) AS MODIFIED FROM TIME TO TIME ("RESOURCES") ARE PROVIDED BY RASPBERRY PI LTD ("RPL") "AS IS" AND ANY EXPRESS OR IMPLIED WARRANTIES, INCLUDING, BUT NOT LIMITED TO, THE IMPLIED WARRANTIES OF MERCHANTABILITY AND FITNESS FOR A PARTICULAR PURPOSE ARE DISCLAIMED. TO THE MAXIMUM EXTENT PERMITTED BY APPLICABLE LAW IN NO EVENT SHALL RPL BE LIABLE FOR ANY DIRECT, INDIRECT, INCIDENTAL, SPECIAL, EXEMPLARY, OR CONSEQUENTIAL DAMAGES (INCLUDING, BUT NOT LIMITED TO, PROCUREMENT OF SUBSTITUTE GOODS OR SERVICES; LOSS OF USE, DATA, OR PROFITS; OR BUSINESS INTERRUPTION) HOWEVER CAUSED AND ON ANY THEORY OF LIABILITY, WHETHER IN CONTRACT, STRICT LIABILITY, OR TORT (INCLUDING NEGLIGENCE OR OTHERWISE) ARISING IN ANY WAY OUT OF THE USE OF THE RESOURCES, EVEN IF ADVISED OF THE POSSIBILITY OF SUCH DAMAGE.

RPL reserves the right to make any enhancements, improvements, corrections or any other modifications to the RESOURCES or any products described in them at any time and without further notice.

The RESOURCES are intended for skilled users with suitable levels of design knowledge. Users are solely responsible for their selection and use of the RESOURCES and any application of the products described in them. User agrees to indemnify and hold RPL harmless against all liabilities, costs, damages or other losses arising out of their use of the RESOURCES.

RPL grants users permission to use the RESOURCES solely in conjunction with the Raspberry Pi products. All other use of the RESOURCES is prohibited. No licence is granted to any other RPL or other third party intellectual property right.

HIGH RISK ACTIVITIES. Raspberry Pi products are not designed, manufactured or intended for use in hazardous environments requiring fail safe performance, such as in the operation of nuclear facilities, aircraft navigation or communication systems, air traffic control, weapons systems or safety-critical applications (including life support systems and other medical devices), in which the failure of the products could lead directly to death, personal injury or severe physical or environmental damage ("High Risk Activities"). RPL specifically disclaims any express or implied warranty of fitness for High Risk Activities and accepts no liability for use or inclusions of Raspberry Pi products in High Risk Activities.

Raspberry Pi products are provided subject to RPL's [Standard Terms](#). RPL's provision of the RESOURCES does not expand or otherwise modify RPL's [Standard Terms](#) including but not limited to the disclaimers and warranties expressed in them.

Table of contents

Colophon	1
Legal disclaimer notice	1
1. About Raspberry Pi Pico W	3
2. Getting on the internet with the C SDK	4
2.1. Installing the SDK and examples	4
2.2. Building an SDK example	4
2.3. Creating your own project	7
2.3.1. Going further	9
2.4. Which hardware am I running on?	9
3. Getting on the internet with MicroPython	11
3.1. Getting MicroPython for Raspberry Pi Pico W	11
3.2. Installing MicroPython on Raspberry Pi Pico W	11
3.3. Connecting from a Raspberry Pi over USB	12
3.3.1. Using an integrated development environment (IDE)	13
3.3.2. Remote access via serial port	13
3.4. The on-board LED	14
3.5. Installing modules	14
3.6. Connecting to a wireless network	15
3.6.1. Connection status codes	16
3.6.2. Setting the country	16
3.6.3. Power-saving mode	16
3.7. The MAC address	17
3.8. Making HTTP requests	17
3.8.1. HTTP with sockets	17
3.8.2. HTTP with urequests	18
3.8.3. Ensuring robust connections	18
3.9. Building HTTP servers	19
3.9.1. A simple server for static pages	20
3.9.2. Controlling an LED via a web server	21
3.9.3. An asynchronous web server	23
3.10. Running iperf	25
3.11. Which hardware am I running on?	25
Appendix A: Building MicroPython from source	27
Appendix B: Documentation release history	28

Chapter 2. Getting on the internet with the C SDK

Wireless support for Raspberry Pi Pico W has been added to the C/C++ SDK.

i NOTE

If you have not previously used an RP2040-based board you can get started by reading [Getting started with Raspberry Pi Pico](#), while further details about the SDK along with API-level documentation can be found in the [Raspberry Pi Pico C/C++ SDK book](#).

2.1. Installing the SDK and examples

For full instructions on how to get started with the SDK see the [Getting started with Raspberry Pi Pico](#) book.

```
$ git clone https://github.com/raspberrypi/pico-sdk.git --branch master
$ cd pico-sdk
$ git submodule update --init
$ cd ..
$ git clone https://github.com/raspberrypi/pico-examples.git --branch master
```

⊖ WARNING

If you have not initialised the `tinycdc` submodule in your `pico-sdk` checkout, then USB CDC serial, and other USB functions and example code, will not work as the SDK will contain no USB functionality. Similarly, if you have not initialised the `cyw43-driver` and `lwip` submodules in your checkout, then network-related functionality will not be enabled.

2.2. Building an SDK example

Building the SDK examples, and other wireless code, requires you to specify your network SSID and password, like this:

```
$ cd pico-examples
$ mkdir build
$ cd build
$ export PICO_SDK_PATH=../../pico-sdk
$ cmake -DPICO_BOARD=pico_w -DWIFI_SSID="Your Network" -DWIFI_PASSWORD="Your Password" ..
Using PICO_SDK_PATH from environment ('../../pico-sdk')
PICO_SDK_PATH is /home/pi/pico/pico-sdk
.
.
.
-- Build files have been written to: /home/pi/pico/pico-examples/build
$
```

NOTE

The command line flags `-DWIFI_SSID="Your Network" -DWIFI_PASSWORD="Your Password"` are used by the `pico-examples` to set the SSID and password to the call to `cyw43_arch_wifi_connect_xxx()` to connect to your wireless network.

To then build a basic example for Raspberry Pi Pico W that will scan for nearby wireless networks, you can do:

```
$ cd pico_w/wifi_scan
$ make
PICO_SDK_PATH is /home/pi/pico-sdk
PICO platform is rp2040.
Build type is Release
PICO target board is pico_w.
.
.
.
[100%] Built target picow_scan_test_background
$
```

Along with other targets, we have now built a binary called `picow_scan_test_background.uf2`, which can be dragged onto the RP2040 USB mass storage device

This binary will scan for wireless networks using the Raspberry Pi Pico W's wireless chip.

The fastest method to load software onto a RP2040-based board for the first time is by mounting it as a USB mass storage device. Doing this allows you to drag a file onto the board to program the flash. Go ahead and connect the Raspberry Pi Pico W to your Raspberry Pi using a micro-USB cable, making sure that you hold down the BOOTSEL button as you do so, to force it into USB mass storage mode.

If you are running the Raspberry Pi Desktop the Raspberry Pi Pico W should automatically mount as a USB mass storage device. From here, you can drag-and-drop the UF2 file onto the mass storage device. RP2040 will reboot, unmounting itself as a mass storage device, and start to run the flashed code.

By default the code will report its results via serial UART.

IMPORTANT

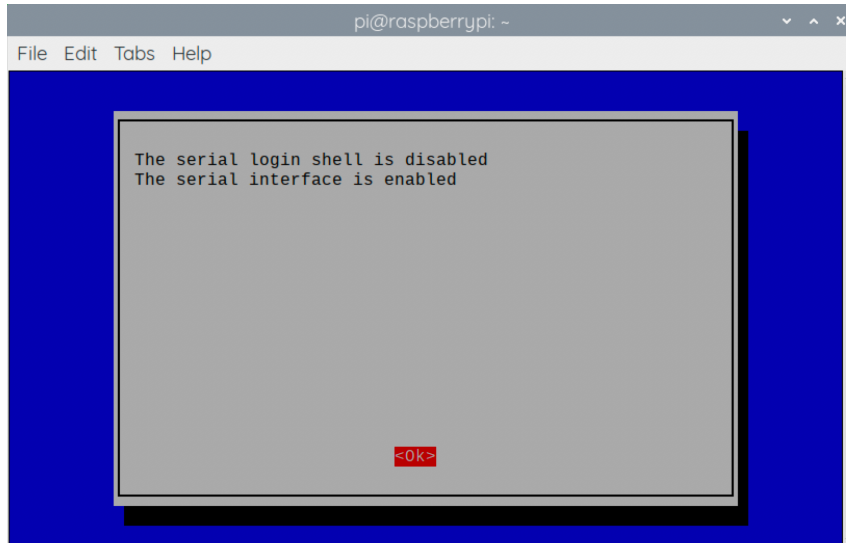
The default UART pins are configured on a per-board basis using board configuration files. The default Raspberry Pi Pico W UART TX pin (out from Pico W) is pin GP0, and the UART RX pin (in to Pico W) is pin GP1.

To see the text, you will need to enable UART serial communications on the Raspberry Pi host. To do so, run `raspi-config`:

```
$ sudo raspi-config
```

and go to [Interfacing Options](#) → [Serial](#) and select "No" when asked "Would you like a login shell to be accessible over serial?", then "Yes" when asked "Would you like the serial port hardware to be enabled?" You should see something like [Figure 2](#).

Figure 2. Enabling a serial UART using `raspi-config` on the Raspberry Pi.



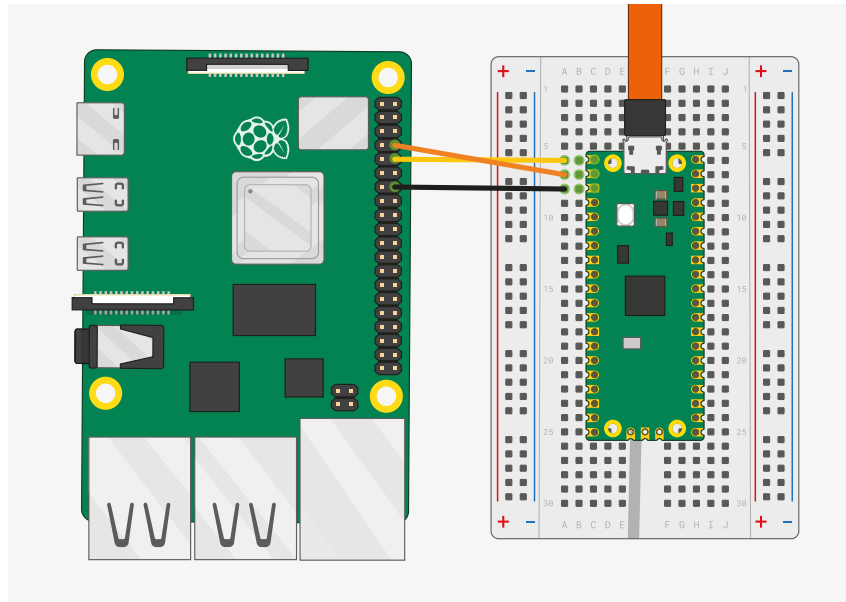
Leaving `raspi-config` you should choose "Yes" and reboot your Raspberry Pi to enable the serial port.

You should then wire the Raspberry Pi and the Raspberry Pi Pico W together with the following mapping:

Raspberry Pi	Raspberry Pi Pico W
GND (Pin 14)	GND (Pin 3)
GPIO15 (UART_RX0, Pin 10)	GP0 (UART0_TX, Pin 1)
GPIO14 (UART_TX0, Pin 8)	GP1 (UART0_RX, Pin 2)

See [Figure 3](#).

Figure 3. A Raspberry Pi 4 and the Raspberry Pi Pico with UART0 connected together.



Once the two boards are wired together you should install `minicom` if you have not already done so:

```
$ sudo apt install minicom
```

and open the serial port:

```
$ minicom -b 115200 -o -D /dev/serial0
```

You should see the results of our wireless scanning being printed to the console, see [Figure 4](#).

TIP

To exit minicom, use **CTRL-A** followed by **X**.

Figure 4. Results of our wireless scanning in the console

```

Performing wifi scan
ssid: Babilim          rssi: -78 chan: 1 mac: ec:f4:51:57:77:b7 sec: 5
ssid: Babilim          rssi: -75 chan: 1 mac: ec:f4:51:57:77:b7 sec: 5
ssid: Babilim          rssi: -56 chan: 1 mac: ec:f4:51:9e:19:67 sec: 5
ssid: Babilim          rssi: -56 chan: 1 mac: ec:f4:51:9e:19:67 sec: 5
ssid: Babilim          rssi: -56 chan: 1 mac: ec:f4:51:9e:19:67 sec: 5
ssid: Babilim          rssi: -78 chan: 1 mac: ec:f4:51:57:77:b7 sec: 5
ssid: Babilim          rssi: -56 chan: 1 mac: ee:f4:51:ae:19:67 sec: 5
ssid: Babilim          rssi: -56 chan: 1 mac: ec:f4:51:9e:19:67 sec: 5
ssid: Babilim          rssi: -78 chan: 1 mac: ec:f4:51:57:77:b7 sec: 5
ssid: Babilim          rssi: -56 chan: 1 mac: ec:f4:51:9e:19:67 sec: 5
ssid: Babilim          rssi: -89 chan: 1 mac: ec:f4:51:57:82:1b sec: 5
ssid: Babilim          rssi: -60 chan: 1 mac: ec:f4:51:9e:19:67 sec: 5
ssid: Babilim          rssi: -58 chan: 1 mac: ee:f4:51:ae:19:67 sec: 5
ssid: VM0567518        rssi: -97 chan: 11 mac: 40:0d:10:d5:6c:c1 sec: 7
ssid: Virgin Media     rssi: -97 chan: 11 mac: 52:0d:10:d5:6c:c1 sec: 5

```

2.3. Creating your own project

Go ahead and create a directory to house your test project sitting alongside the `pico-sdk` directory,

```
$ ls -la
total 16
drwxr-xr-x  7 aa  staff  224  6 Apr 10:41 ./
drwx-----@ 27 aa  staff  864  6 Apr 10:41 ../
drwxr-xr-x 10 aa  staff  320  6 Apr 09:29 pico-examples/
drwxr-xr-x 13 aa  staff  416  6 Apr 09:22 pico-sdk/
$ mkdir test
$ cd test
```

and then create a `test.c` file in the directory,

```

1 #include <stdio.h>
2
3 #include "pico/stdlib.h"
4 #include "pico/cyw43_arch.h"
5
6 char ssid[] = "A Network";①
7 char pass[] = "A Password";②
8
9 int main() {
10     stdio_init_all();

```

```

11
12     if (cyw43_arch_init_with_country(CYW43_COUNTRY_UK)) {
13         printf("failed to initialise\n");
14         return 1;
15     }
16     printf("initialised\n");
17
18     cyw43_arch_enable_sta_mode();
19
20     if (cyw43_arch_wifi_connect_timeout_ms(ssid, pass, CYW43_AUTH_WPA2_AES_PSK, 10000)) {
21         printf("failed to connect\n");
22         return 1;
23     }
24     printf("connected\n");
25 }

```

1. Replace **A Network** with the SSID name of your wireless network.
2. Replace **A Password** with the password for your wireless network.

along with a `CMakeLists.txt` file,

```

cmake_minimum_required(VERSION 3.13)

include(pico_sdk_import.cmake)

project(test_project C CXX ASM)
set(CMAKE_C_STANDARD 11)
set(CMAKE_CXX_STANDARD 17)
pico_sdk_init()

add_executable(test
    test.c
)

pico_enable_stdio_usb(test 1)
pico_enable_stdio_uart(test 1)

pico_add_extra_outputs(test)

target_include_directories(test PRIVATE ${CMAKE_CURRENT_LIST_DIR} )

target_link_libraries(test pico_cyw43_arch_lwip_threadsafe_background pico_stdlib)

```

Then copy the `pico_sdk_import.cmake` file from the `external` folder in your `pico-sdk` installation to your test project folder,

```
$ cp ../pico-sdk/external/pico_sdk_import.cmake .
```

along with the `lwipopts.h` file needed by the lwIP stack.

```
$ cp ../pico-examples/pico_w/lwipopts_examples_common.h lwipopts.h
```

You should now have something that looks like this,

```
$ ls -la
total 32
drwxr-xr-x  6 aa  staff   192B  29 Jun 18:11 ./
drwxr-xr-x  7 aa  staff   224B  29 Jun 16:57 ../
-rw-r--r--@ 1 aa  staff   379B  29 Jun 18:10 CMakeLists.txt
-rw-rw-r--@ 1 aa  staff   3.3K  15 Jun 00:34 lwipopts.h
-rw-rw-r--@ 1 aa  staff   3.1K  15 Jun 00:34 pico_sdk_import.cmake
-rw-r--r--@ 1 aa  staff   427B  29 Jun 17:03 test.c
```

and can build it as we did before with our previous example in the last section.

```
$ mkdir build
$ cd build
$ export PICO_SDK_PATH=../../pico-sdk
$ cmake -DPICO_BOARD=pico_w ..
$ make
```

Afterwards unplug your Raspberry Pi Pico W from your computer if it is plugged in already. Then push and hold the BOOTSEL button while plugging it back into your computer. Then drag and drop the `test.uf2` binary onto the RPI-RP2 mass storage volume which will mount on your desktop.

Open the serial port:

```
$ minicom -b 115200 -o -D /dev/serial0
```

and you should see the a message indicating that the Pico W has connected to your wireless network.

2.3.1. Going further

More information on the C SDK can be found in the [Raspberry Pi Pico C/C++ SDK](#) book. While information around lwIP can be found on the [project's website](#). Example code can be found as part of the [pico-examples](#) Github repository.

2.4. Which hardware am I running on?

There is no direct method in the C SDK that can be called to allow software to discover whether it is running on a Raspberry Pi Pico or a Pico W. However, it is possible to indirectly discover the type of underlying hardware. If the board is powered via USB or `VSYS`, so `3v3_EN` is not pulled low externally, with GPIO25 low, ADC3 will be around 0V for Raspberry Pi Pico W and approximately 1/3 of `VSYS` for Raspberry Pi Pico.

Creating a `test.c` file,

```
1 #include <stdio.h>
2
3 #include "pico/stdlib.h"
4 #include "hardware/gpio.h"
5 #include "hardware/adc.h"
6
7 int main() {
8     stdio_init_all();
9
10    adc_init();
11    adc_gpio_init(29);
```

```
12     adc_select_input(3);
13     const float conversion_factor = 3.3f / (1 << 12);
14     uint16_t result = adc_read();
15     printf("ADC3 value: 0x%03x, voltage: %f V\n", result, result * conversion_factor);
16
17     gpio_init(25);
18     gpio_set_dir(25, GPIO_IN);
19     uint value = gpio_get(25);
20     printf("GP25 value: %i", value);
21 }
```

alongside the following `CMakeLists.txt` file,

```
cmake_minimum_required(VERSION 3.13)

include(pico_sdk_import.cmake)

project(test_project C CXX ASM)
set(CMAKE_C_STANDARD 11)
set(CMAKE_CXX_STANDARD 17)
pico_sdk_init()

add_executable(test
    test.c
)

target_link_libraries(test pico_stdlib hardware_adc hardware_gpio)

pico_enable_stdio_usb(test 1)
pico_enable_stdio_uart(test 1)

pico_add_extra_outputs(test)
```

in a project directory gives this for Raspberry Pi Pico W,

```
ADC3 value: 0x01c, voltage: 0.022559 V
GP25 value: 0
```

and this for an original Raspberry Pi Pico board,

```
ADC3 value: 0x2cd, voltage: 0.577661 V
GP25 value: 0
```

Chapter 3. Getting on the internet with MicroPython

Wireless support for Raspberry Pi Pico W has been added to MicroPython. A pre-built binary, which can be downloaded from the MicroPython section of the [documentation](#) website, should serve most use cases and comes with `micropython-lib` pre-integrated into the binary.

i NOTE

If you have not previously used an RP2040-based board you can get started by reading [Raspberry Pi Pico Python SDK](#) book.

3.1. Getting MicroPython for Raspberry Pi Pico W

Pre-built Binary

A pre-built binary of the latest MicroPython firmware is available from the [MicroPython section of the documentation](#).

The fastest way to get MicroPython is to download the pre-built release binary from the [Documentation](#) pages. If you can't or don't want to use the pre-built release – for example, if you want to develop a C module for MicroPython – you can follow the instructions in [Appendix A](#) to get the source code for MicroPython, which you can use to build your own MicroPython firmware binary.

3.2. Installing MicroPython on Raspberry Pi Pico W

Raspberry Pi Pico W has a BOOTSEL mode for programming firmware over the USB port. Holding the BOOTSEL button when powering up your board will put it into a special mode where it appears as a USB mass storage device. First make sure your Raspberry Pi Pico W is not plugged into any source of power: disconnect the micro USB cable if plugged in, and disconnect any other wires that might be providing power to the board, e.g. through the VSYS or VBUS pin. Now hold down the BOOTSEL button, and plug in the micro USB cable (which hopefully has its other end plugged into your computer).

A drive called RPI-RP2 should pop up. Go ahead and drag the MicroPython `firmware.uf2` file onto this drive. This programs the MicroPython firmware onto the flash memory on your Raspberry Pi Pico W.

It should take a few seconds to program the UF2 file into the flash. The board will automatically reboot when finished, causing the RPI-RP2 drive to disappear, and boot into MicroPython.

When MicroPython boots for the first time, it will sit and wait for you to connect and tell it what to do. You can load a `.py` file from your computer onto the board, but a more immediate way to interact with it is through what is called the *read-evaluate-print loop*, or REPL.

There are two ways to connect to this REPL; so you can communicate with the MicroPython firmware on your board over USB, or over the UART serial port on Raspberry Pi Pico W GPIOs.

i NOTE

The MicroPython port for RP2040 does not expose a REPL over a UART port by default, please see [Raspberry Pi Pico Python SDK](#) for more details of how to configure MicroPython to allow you to connect to the REPL over UART.

3.3. Connecting from a Raspberry Pi over USB

The MicroPython firmware is equipped with a virtual USB serial port which is accessed through the micro USB connector on Raspberry Pi Pico W. Your computer should notice this serial port and list it as a character device, most likely `/dev/ttyACM0`.

💡 TIP

You can run `ls /dev/tty*` to list your serial ports. There may be quite a few, but MicroPython's USB serial will start with `/dev/ttyACM`. If in doubt, unplug the micro USB connector and see which one disappears. If you don't see anything, you can try rebooting your Raspberry Pi.

You can install `minicom` to access the serial port:

```
$ sudo apt install minicom
```

and then open it as such:

```
$ minicom -o -D /dev/ttyACM0
```

Where the `-D /dev/ttyACM0` is pointing `minicom` at MicroPython's USB serial port, and the `-o` flag essentially means "just do it". There's no need to worry about baud rate, since this is a virtual serial port.

Press the enter key a few times in the terminal where you opened `minicom`. You should see this:

```
>>>
```

This is a *prompt*. MicroPython wants you to type something in, and tell it what to do.

If you press `CTRL-D` on your keyboard whilst the `minicom` terminal is focused, you should see a message similar to this:

```
MPY: soft reboot
MicroPython v1.18-524-g22474d25d on 2022-05-25; Raspberry Pi Pico W with RP2040
Type "help()" for more information.
>>>
```

This key combination tells MicroPython to reboot. You can do this at any time. When it reboots, MicroPython will print out a message saying exactly what firmware version it is running, and when it was built. Your version number will be different from the one shown here.

i NOTE

If you are working on an Apple Mac, so long as you're using a recent version of macOS like Catalina, drivers should already be loaded. Otherwise, see the manufacturers' website for [FTDI Chip Drivers](#). Then you should use a Terminal program to connect to Serial-over-USB (USB CDC). The serial port will show up as `/dev/tty.usbmodem` with a number appended to the end.

If you don't already have a Terminal program installed you can install `minicom` using [Homebrew](#):

```
$ brew install minicom
```

and connect to the board as below.

```
$ minicom -b 115200 -o -D /dev/tty.usbmodem000000000001
```

Other Terminal applications like [CoolTerm](#) or [Serial](#) can also be used.

3.3.1. Using an integrated development environment (IDE)

The MicroPython port to Raspberry Pi Pico W and other RP2040-based boards works with commonly-used development environments. [Thonny](#) is the recommended editor. Thonny packages are available for Linux, MS Windows, and macOS. After installation, using the Thonny development environment is the same across all three platforms. The latest release of Thonny can be downloaded from [thonny.org](#).

For full details on how to use the Thonny editor, see the section on [using a development environment](#) in the [Raspberry Pi Pico Python SDK](#) book.

3.3.2. Remote access via serial port

It's suggested you use the `mremote` tool to access the device via the serial port.

```
$ pip install mremote
$ mremote connect list
/dev/cu.Bluetooth-Incoming-Port None 0000:0000 None None
/dev/cu.usbmodem22201 e660583883807e27 2e8a:0005 MicroPython Board in FS mode
$ mremote connect port:/dev/cu.usbmodem22201
Connected to MicroPython at /dev/cu.usbmodem22201
Use Ctrl-] to exit this shell
>>>
```

With this you can run a script from your local machine directly on Raspberry Pi Pico W.

```
$ mremote connect port:/dev/cu.usbmodem22201
$ mremote run hello_world.py
```

i NOTE

For more information on `mremote` see the [documentation](#).

3.4. The on-board LED

Unlike the original Raspberry Pi Pico, the on-board LED on Pico W is not connected to a pin on RP2040, but instead to a GPIO pin on the wireless chip. MicroPython has been modified accordingly. This means that you can now do:

```
>>> import machine
>>> led = machine.Pin("LED", machine.Pin.OUT)
>>> led.off()
>>> led.on()
```

or even:

```
>>> led.toggle()
```

to change the current state. However, if you now look at the `led` object:

```
>>> led
Pin(WL_GPI00, mode=OUT)
>>>
```

You can also do the following:

```
>>> led = machine.Pin("LED", machine.Pin.OUT, value=1)
```

which will configure the `led` object, associate it with the on-board LED **and** turn the LED on.

i NOTE

Full details of the Raspberry Pi Pico W can be found in the [Raspberry Pi Pico W Datasheet](#). `WL_GPI01` is connected to the `PS/SYNC` pin on the RT6154A to allow selection of different operating modes, while `WL_GPI02` can be used to monitor USB `VBUS`.

3.5. Installing modules

You can use the `upip` tool to install modules that are not present in the default MicroPython installation.

```
>>> import upip
>>> upip.install("micropython-pystone_lowmem")
>>> import pystone_lowmem
>>> pystone_lowmem.main()
Pystone(1.2) time for 500 passes = 402ms
```

```
This machine benchmarks at 1243 pystones/second
>>>
```

3.6. Connecting to a wireless network

We're using the `network` library to talk to the wireless hardware:

```
1 import network
2 import time
3
4 wlan = network.WLAN(network.STA_IF)
5 wlan.active(True)
6 wlan.connect('Wireless Network', 'The Password')
7
8 while not wlan.isconnected() and wlan.status() >= 0:
9     print("Waiting to connect:")
10    time.sleep(1)
11
12 print(wlan.ifconfig())
```

although more correctly, you should wait for the connection to succeed or fail in your code, and handle any connection errors that might occur.

```
1 import time
2 import network
3
4 ssid = 'Wireless Network'
5 password = 'The Password'
6
7 wlan = network.WLAN(network.STA_IF)
8 wlan.active(True)
9 wlan.connect(ssid, password)
10
11 # Wait for connect or fail
12 max_wait = 10
13 while max_wait > 0:
14     if wlan.status() < 0 or wlan.status() >= 3:
15         break
16     max_wait -= 1
17     print('waiting for connection...')
18     time.sleep(1)
19
20 # Handle connection error
21 if wlan.status() != 3:
22     raise RuntimeError('network connection failed')
23 else:
24     print('connected')
25     status = wlan.ifconfig()
26     print( 'ip = ' + status[0] )
```

You can also disconnect and then connect to a different wireless network.

```

1 # Connect to another network
2 wlan.disconnect();
3 wlan.connect('Other Network', 'The Other Password')

```

For more information on the `network.WLAN` library see the [library documentation](#).

3.6.1. Connection status codes

The values returned by the `wlan.status()` call are defined in the CYW43 wireless driver, and are passed directly through to user-code.

```

// Return value of cyw43_wifi_link_status
#define CYW43_LINK_DOWN      (0)
#define CYW43_LINK_JOIN     (1)
#define CYW43_LINK_NOIP    (2)
#define CYW43_LINK_UP      (3)
#define CYW43_LINK_FAIL    (-1)
#define CYW43_LINK_NONET   (-2)
#define CYW43_LINK_BADAUTH (-3)

```

3.6.2. Setting the country

By default, the country setting for the wireless network is unset. This means that the driver will use a default world-wide safe setting, which may mean some channels are unavailable.

```

>>> import rp2
>>> rp2.country()
'\x00\x00'
>>>

```

This can cause problems on some wireless networks. If you find that your Raspberry Pi Pico W does not connect to your wireless network you may want to try setting the country code, e.g.

```

>>> rp2.country('GB')

```

3.6.3. Power-saving mode

By default the wireless chip will active power-saving mode when it is idle, which might lead it to being less responsive. If you are running a server or need more responsiveness, you can change this by toggling the power mode.

```

1 import network
2
3 wlan = network.WLAN(network.STA_IF)
4 wlan.active(True)
5 wlan.config(pm = 0xa11140)

```

3.7. The MAC address

The MAC is stored in the wireless chip OTP.

```
1 import network
2 import ubinascii
3
4 wlan = network.WLAN(network.STA_IF)
5 wlan.active(True)
6 mac = ubinascii.hexlify(network.WLAN().config('mac'), ':').decode()
7 print(mac)
8
9 # Other things you can query
10 print(wlan.config('channel'))
11 print(wlan.config('ssid'))
12 print(wlan.config('txpower'))
```

NOTE

We have to set the wireless active (which loads the firmware) before we can get the MAC address.

3.8. Making HTTP requests

You can take a low-level approach to HTTP requests using raw sockets, or a high-level approach using the `urequests` library.

3.8.1. HTTP with sockets

```
1 # Connect to network
2 import network
3
4 wlan = network.WLAN(network.STA_IF)
5 wlan.active(True)
6 wlan.connect('Wireless Network', 'The Password')
7
8 # Should be connected and have an IP address
9 wlan.status() # 3 == success
10 wlan.ifconfig()
11
12 # Get IP address for google.com
13 import socket
14 ai = socket.getaddrinfo("google.com", 80)
15 addr = ai[0][-1]
16
17 # Create a socket and make a HTTP request
18 s = socket.socket()
19 s.connect(addr)
20 s.send(b"GET / HTTP/1.0\r\n\r\n")
21
22 # Print the response
23 print(s.recv(512))
```

3.8.2. HTTP with urequests

It is much simpler to use the `urequests` library to make an HTTP connection.

```
1 # Connect to network
2 import network
3 wlan = network.WLAN(network.STA_IF)
4 wlan.active(True)
5 wlan.connect('Wireless Network', 'The Password')
6
7 # Make GET request
8 import urequests
9 r = urequests.get("http://www.google.com")
10 print(r.content)
11 r.close()
```

Support has been added for redirects.

```
1 import urequests
2 r = urequests.get("http://www.raspberrypi.com")
3 print(r.status_code) # redirects to https
4 r.close()
```

i NOTE

HTTPS works, but you should be aware that SSL verification is currently disabled.

The `urequests` library comes with limited JSON support.

```
>>> r = urequests.get("http://date.jsonstest.com")
>>> r.json()
{'milliseconds_since_epoch': 1652188199441, 'date': '05-10-2022', 'time': '01:09:59 PM'}
>>>>
```

For more information on `urequests` see the [library documentation](#).

i IMPORTANT

You must close the returned response object after making a request using the `urequests` library using `response.close()`. If you do not, the object will not be garbage-collected, and if the request is being made inside a loop this will quickly lead to a crash.

3.8.3. Ensuring robust connections

This partial example illustrates a more robust approach to connecting to a network using `urequests`.

```
1 import time
2 import network
3 import urequests as requests
4
5 ssid = 'A Network'
```

```

6 password = 'The Password'
7
8 wlan = network.WLAN(network.STA_IF)
9 wlan.active(True)
10 wlan.connect(ssid, password)
11
12 # Wait for connect or fail
13 max_wait = 10
14 while max_wait > 0:
15     if wlan.status() < 0 or wlan.status() >= 3:
16         break
17     max_wait -= 1
18     print('waiting for connection...')
19     time.sleep(1)
20
21 # Handle connection error
22 if wlan.status() != 3:
23     raise RuntimeError('network connection failed')
24 else:
25     print('connected')
26     status = wlan.ifconfig()
27     print( 'ip = ' + status[0] )
28
29 while True:
30
31     # Do things here, perhaps measure something using a sensor?
32
33     # ...and then define the headers and payloads
34     headers = ...
35     payload = ...
36
37     # Then send it in a try/except block
38     try:
39         print("sending...")
40         response = requests.post("A REMOTE END POINT", headers=headers, data=payload)
41         print("sent (" + str(response.status_code) + "), status = " + str(wlan.status()) )
42         response.close()
43     except:
44         print("could not connect (status = " + str(wlan.status()) + ")")
45         if wlan.status() < 0 or wlan.status() >= 3:
46             print("trying to reconnect...")
47             wlan.disconnect()
48             wlan.connect(ssid, password)
49             if wlan.status() == 3:
50                 print('connected')
51             else:
52                 print('failed')
53
54     time.sleep(5)

```

Here we handle the possibility that we lose connection to our wireless network and then will seek to reconnect.

3.9. Building HTTP servers

You can build synchronous or asynchronous web servers.

3.9.1. A simple server for static pages

You can use the `socket` library to build a simple web server.

```
1 import network
2 import socket
3 import time
4
5 from machine import Pin
6
7 led = Pin(15, Pin.OUT)
8
9 ssid = 'A Network'
10 password = 'A Password'
11
12 wlan = network.WLAN(network.STA_IF)
13 wlan.active(True)
14 wlan.connect(ssid, password)
15
16 html = """<!DOCTYPE html>
17 <html>
18     <head> <title>Pico W</title> </head>
19     <body> <h1>Pico W</h1>
20         <p>Hello World</p>
21     </body>
22 </html>
23 """
24
25 # Wait for connect or fail
26 max_wait = 10
27 while max_wait > 0:
28     if wlan.status() < 0 or wlan.status() >= 3:
29         break
30     max_wait -= 1
31     print('waiting for connection...')
32     time.sleep(1)
33
34 # Handle connection error
35 if wlan.status() != 3:
36     raise RuntimeError('network connection failed')
37 else:
38     print('connected')
39     status = wlan.ifconfig()
40     print( 'ip = ' + status[0] )
41
42 # Open socket
43 addr = socket.getaddrinfo('0.0.0.0', 80)[0][-1]
44
45 s = socket.socket()
46 s.bind(addr)
47 s.listen(1)
48
49 print('listening on', addr)
50
51 # Listen for connections
52 while True:
53     try:
54         cl, addr = s.accept()
55         print('client connected from', addr)
56         cl_file = cl.makefile('rwb', 0)
57         while True:
58             line = cl_file.readline()
```

```

59         if not line or line == b'\r\n':
60             break
61         response = html
62         cl.send('HTTP/1.0 200 OK\r\nContent-type: text/html\r\n\r\n')
63         cl.send(response)
64         cl.close()
65
66     except OSError as e:
67         cl.close()
68         print('connection closed')

```

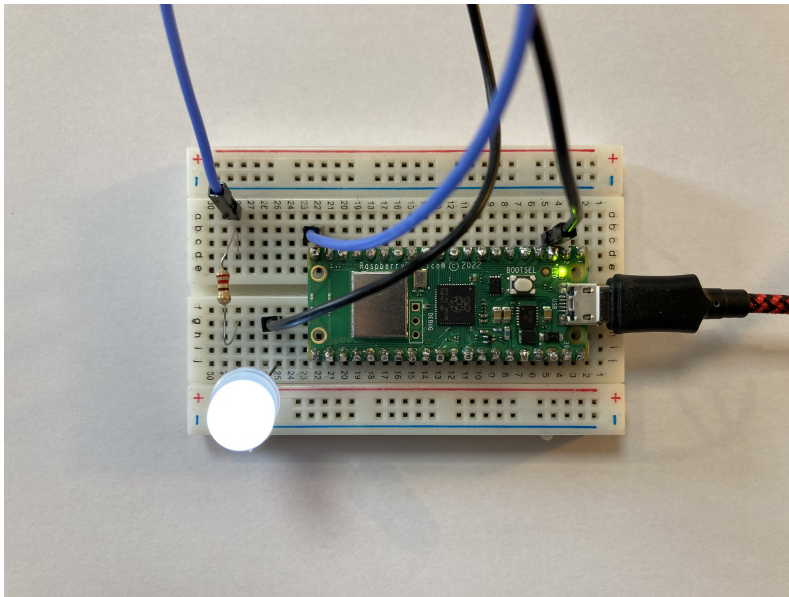
NOTE

This example is synchronous, for more robust request handling you should implement the server to handle requests asynchronously.

3.9.2. Controlling an LED via a web server

Going further, we can implement a RESTful web server that will allow us to control an LED.

Figure 5. The Raspberry Pi Pico W with an LED on GP15.



Connecting an LED to GP15 we can turn the LED on and off by using HTTP GET. We can do this by going to <http://192.168.1.X/light/on> to turn the LED on, and <http://192.168.1.X/light/off> to turn the LED off, in our web browser; where `192.168.1.X` is the IP address of our Pico W, which will be printed in the console after it connects to the network.

```

1 import network
2 import socket
3 import time
4
5 from machine import Pin
6
7 led = Pin(15, Pin.OUT)
8
9 ssid = 'A Network'
10 password = 'A Password'
11
12 wlan = network.WLAN(network.STA_IF)
13 wlan.active(True)

```

```
14 wlan.connect(ssid, password)
15
16 html = """<!DOCTYPE html>
17 <html>
18   <head> <title>Pico W</title> </head>
19   <body> <h1>Pico W</h1>
20     <p>%s</p>
21   </body>
22 </html>
23 """
24
25 # Wait for connect or fail
26 max_wait = 10
27 while max_wait > 0:
28     if wlan.status() < 0 or wlan.status() >= 3:
29         break
30     max_wait -= 1
31     print('waiting for connection...')
32     time.sleep(1)
33
34 # Handle connection error
35 if wlan.status() != 3:
36     raise RuntimeError('network connection failed')
37 else:
38     print('connected')
39     status = wlan.ifconfig()
40     print( 'ip = ' + status[0] )
41
42 # Open socket
43 addr = socket.getaddrinfo('0.0.0.0', 80)[0][-1]
44
45 s = socket.socket()
46 s.bind(addr)
47 s.listen(1)
48
49 print('listening on', addr)
50
51 # Listen for connections
52 while True:
53     try:
54         cl, addr = s.accept()
55         print('client connected from', addr)
56         request = cl.recv(1024)
57         print(request)
58
59         request = str(request)
60         led_on = request.find('/light/on')
61         led_off = request.find('/light/off')
62         print( 'led on = ' + str(led_on))
63         print( 'led off = ' + str(led_off))
64
65         if led_on == 6:
66             print("led on")
67             led.value(1)
68             stateis = "LED is ON"
69
70         if led_off == 6:
71             print("led off")
72             led.value(0)
73             stateis = "LED is OFF"
74
75         response = html % stateis
76
```

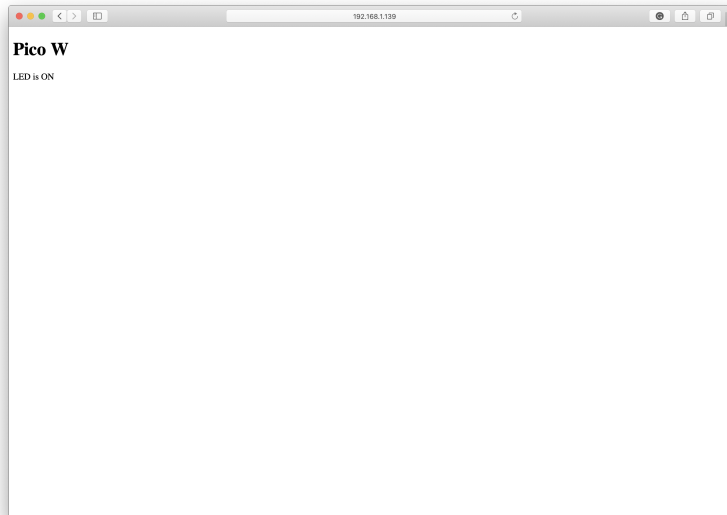
```

77     cl.send('HTTP/1.0 200 OK\r\nContent-type: text/html\r\n\r\n')
78     cl.send(response)
79     cl.close()
80
81     except OSError as e:
82         cl.close()
83         print('connection closed')

```

Running the code, we can see the response in our browser.

Figure 6. What we see in our web browser when connecting to our Pico W web server



3.9.3. An asynchronous web server

We can use the `uasyncio` module to implement the same server, but in this case it will handle HTTP requests asynchronously rather than blocking.

```

1 import network
2 import socket
3 import time
4
5 from machine import Pin
6 import uasyncio as asyncio
7
8 led = Pin(15, Pin.OUT)
9 onboard = Pin("LED", Pin.OUT, value=0)
10
11 ssid = 'A Network'
12 password = 'A Password'
13
14 html = """<!DOCTYPE html>
15 <html>
16     <head> <title>Pico W</title> </head>
17     <body> <h1>Pico W</h1>
18         <p>%s</p>
19     </body>
20 </html>
21 """
22
23 wlan = network.WLAN(network.STA_IF)
24

```

```
25 def connect_to_network():
26     wlan.active(True)
27     wlan.config(pm = 0xa11140) # Disable power-save mode
28     wlan.connect(ssid, password)
29
30     max_wait = 10
31     while max_wait > 0:
32         if wlan.status() < 0 or wlan.status() >= 3:
33             break
34         max_wait -= 1
35         print('waiting for connection...')
36         time.sleep(1)
37
38     if wlan.status() != 3:
39         raise RuntimeError('network connection failed')
40     else:
41         print('connected')
42         status = wlan.ifconfig()
43         print('ip = ' + status[0])
44
45 async def serve_client(reader, writer):
46     print("Client connected")
47     request_line = await reader.readline()
48     print("Request:", request_line)
49     # We are not interested in HTTP request headers, skip them
50     while await reader.readline() != b"\r\n":
51         pass
52
53     request = str(request_line)
54     led_on = request.find('/light/on')
55     led_off = request.find('/light/off')
56     print('led on = ' + str(led_on))
57     print('led off = ' + str(led_off))
58
59     stateis = ""
60     if led_on == 6:
61         print("led on")
62         led.value(1)
63         stateis = "LED is ON"
64
65     if led_off == 6:
66         print("led off")
67         led.value(0)
68         stateis = "LED is OFF"
69
70     response = html % stateis
71     writer.write('HTTP/1.0 200 OK\r\nContent-type: text/html\r\n\r\n')
72     writer.write(response)
73
74     await writer.drain()
75     await writer.wait_closed()
76     print("Client disconnected")
77
78 async def main():
79     print('Connecting to Network...')
80     connect_to_network()
81
82     print('Setting up webserver...')
83     asyncio.create_task(asyncio.start_server(serve_client, "0.0.0.0", 80))
84     while True:
85         onboard.on()
86         print("heartbeat")
87         await asyncio.sleep(0.25)
```

```

88     onboard.off()
89     await asyncio.sleep(5)
90
91 try:
92     asyncio.run(main())
93 finally:
94     asyncio.new_event_loop()

```

3.10. Running iperf

You can install `iperf` using the `upip` tool:

```

>>> import network
>>> wlan = network.WLAN(network.STA_IF)
>>> wlan.active(True)
>>> wlan.connect('Wireless Network', 'The Password')
>>> import upip
>>> upip.install("uiperf3")

```

and start an `iperf3` client.

i NOTE

The `iperf` server should be running on another machine.

```

>>> import uiperf3
>>> uiperf3.client('10.3.15.xx')

CLIENT MODE: TCP sending
Connecting to ('10.3.15.234', 5201)
Interval      Transfer      Bitrate
0.00-1.00    sec  48.4 KBytes  397 Kbits/sec
1.00-2.00    sec  48.4 KBytes  397 Kbits/sec
2.00-3.00    sec  80.5 KBytes  659 Kbits/sec
3.00-4.00    sec   100 KBytes  819 Kbits/sec
4.00-5.00    sec   103 KBytes  845 Kbits/sec
5.00-6.00    sec   22.7 KBytes  186 Kbits/sec
6.00-7.00    sec    0.00 Bytes  0.00 bits/sec
7.00-8.00    sec    0.00 Bytes  0.00 bits/sec
8.00-9.00    sec   45.3 KBytes  371 Kbits/sec
9.00-10.00   sec   89.1 KBytes  729 Kbits/sec
10.00-10.01  sec    0.00 Bytes  0.00 bits/sec
-----
0.00-10.01  sec   538 KBytes  440 Kbits/sec  sender
>>>

```

3.11. Which hardware am I running on?

There is no direct method for software written in MicroPython to discover whether it is running on a Raspberry Pi Pico or a Pico W by looking at the hardware. However, you can tell indirectly by looking to see if network functionality is included in your particular MicroPython firmware:

```
1 import network
2 if hasattr(network, "WLAN"):
3     # the board has WLAN capabilities
```

Alternatively, you can inspect the MicroPython firmware version to check whether it was compiled for Raspberry Pi Pico or for Pico W using the `sys` module.

```
>>> import sys
>> sys.implementation
(name='micropython', version=(1, 19, 1), _machine='Raspberry Pi Pico W with RP2040', _mpy=4102)
```

So if `'Pico W'` in `sys.implementation._machine` can be used to detect whether your firmware was compiled for Pico W.

Appendix A: Building MicroPython from source

Before you can proceed with building a MicroPython UF2 for Raspberry Pi Pico W from source, you should install the normal dependencies to build MicroPython. See Section 1.3 of the [Raspberry Pi Pico Python SDK](#) book for full details.

Afterwards you should clone the `micropython` and `micropython-lib` repositories.

```
$ mkdir pico_w
$ cd pico_w
$ git clone https://github.com/micropython/micropython.git --branch master
$ git clone https://github.com/micropython/micropython-lib.git --branch master
```

i NOTE

Putting `micropython-lib` side-by-side with your MicroPython checkout will mean that it is automatically pulled into your MicroPython build, and libraries in `micropython-lib` will be "pre-added" to the list of modules available by default on your Pico W device.

Then build MicroPython:

```
$ cd micropython
$ make -C ports/rp2 BOARD=PICO_W submodules
$ make -C mpy-cross
$ cd ports/rp2
$ make BOARD=PICO_W
```

If everything went well, there will be a new directory called `build-PICO_W` (that's `ports/rp2/build-PICO_W` relative to the top-level `micropython` directory), which contains the new firmware binaries. Drag and drop the `firmware.uf2` onto the RPI-RP2 drive that pops up once your Raspberry Pi Pico W is in BOOTSEL mode.

Appendix B: Documentation release history

Table 1.
Documentation
release history

Release	Date	Description
1.0	30 Jun 2022	<ul style="list-style-type: none">• Initial release
Pico and Pico W databooks combined into a unified release history		
2.0	01 Dec 2022	<ul style="list-style-type: none">• Minor updates and corrections• Added RP2040 availability information• Added RP2040 storage conditions and thermal characteristics• Replace SDK library documentation with links to the online version• Updated Picoprobe build and usage instructions

The latest release can be found at <https://datasheets.raspberrypi.com/picow/connecting-to-the-internet-with-pico-w.pdf>.



Raspberry Pi is a trademark of Raspberry Pi Ltd