



No. C43E3
Scale 1:50,000

Grid reference table showing adjacent map sheets: C43D14, C43E2, C43E6, C43D15, C43E3, C43E7, C43D16, C43E4, C43E8.

1 Mysore, KARNATAKA
2 Nlgr, TAMIL NADU
3 Lakshadweep Sea.

भारतीय सर्वेक्षण विभाग SURVEY OF INDIA

1st Edition 2010. Price - Rs. 50/-

CONVENTIONAL SYMBOLS

- Express highway with toll, with bridge, with distance stone
Roads, metalled according to importance
Roads, double carriageway according to importance
Unmetalled road, Cart-track, Pack-track with pass, Foot path
Streams with track in bed, underfed, Canal
Dams, masonry or rock-filled, earthenwork, Weir
River, dry with water channel, with island & rocks, Tidal river
Submerged rocks, Shoal, Swamp, Reeds
Wells, lined, unlined, Tube-well, Spring, Tanks, perennial, dry
Embankments, road or rail, bank, broken ground
Railways, broad gauge, double, single with distance stone, etc.
Railways, other gauge, double, single with distance stone, etc.
Mineral line or tramway, Kin, Cutting with tunnel
Contours with sub-features, Rocky slopes, Giffs
Sand features (1) (2) (3) (4) (5) (6) (7) (8) (9) (10) (11) (12) (13) (14) (15) (16) (17) (18) (19) (20) (21) (22) (23) (24) (25) (26) (27) (28) (29) (30) (31) (32) (33) (34) (35) (36) (37) (38) (39) (40) (41) (42) (43) (44) (45) (46) (47) (48) (49) (50) (51) (52) (53) (54) (55) (56) (57) (58) (59) (60) (61) (62) (63) (64) (65) (66) (67) (68) (69) (70) (71) (72) (73) (74) (75) (76) (77) (78) (79) (80) (81) (82) (83) (84) (85) (86) (87) (88) (89) (90) (91) (92) (93) (94) (95) (96) (97) (98) (99) (100)

REFERENCE

NH 212 National Highway No. 212

NOTES

Heights and Contours have not been shown.
A relative height, e.g., B, represents the approximate height, in metres, between the top and bottom of a steep slope.
Important buildings are shown in black with name.
Tube-wells and wells are numerous throughout the sheet, only the important ones have been shown.
Unmetalled roads and cart tracks in this sheet are generally not suitable in dry season. Permission to use these roads is granted by the irrigation authorities.
Hubs are numerous, some have been omitted to bring out their relative distribution.
Permission to use the roads in Estates is required from the Estate authorities.
Christian memorials are shown thus: -

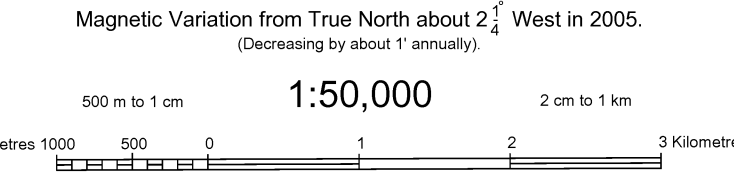
COMPILATION INDEX

A. Surveyed during 1967-68. Updated for major details during 2005-06.



Projection - UTM Datum - WGS 84

Magnetic Variation from True North about 2° West in 2005. (Decreasing by about 1" annually).



For further details about this map, please contact Director, Kerala and Lakshadweep Geo-Spatial Data Centre, Survey of India, CGO Complex, Poonkulam, Vellore P.O., Thiruvananthapuram.

WEBSITE - www.surveyofindia.gov.in

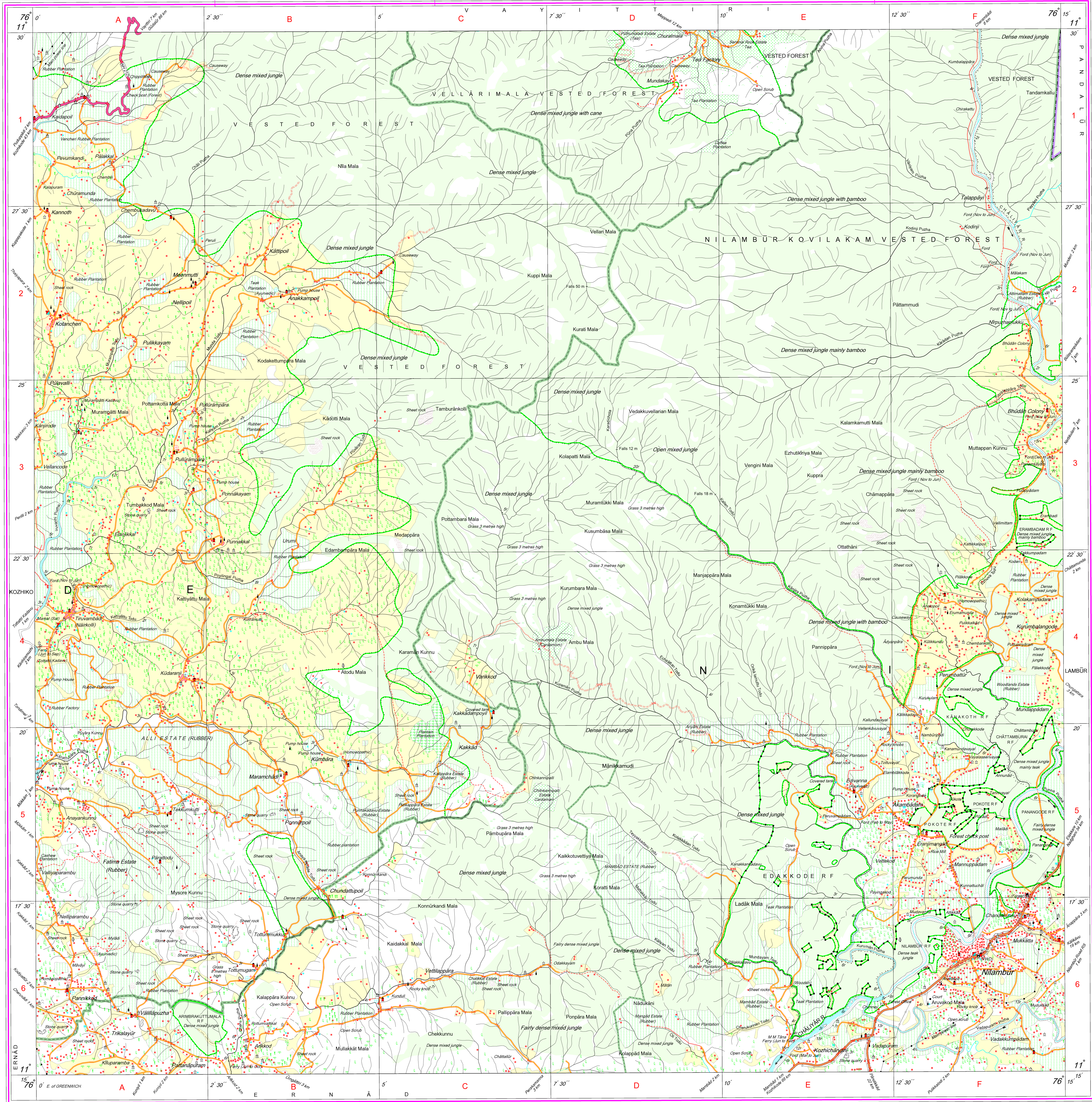
Reproduction in whole or part by any means is prohibited without the written permission of Survey of India, the National Mapping Agency.

REG No. - SPG D 10 (Wests and Lakshadweep GDC-1:50,000)

Printed at the Southern Printing Group of Survey of India

Survey of India, Hathi Barkala Estate, Post Box No. 37, Dehra Dun-248001 (Uttarakhand), Department of Science & Technology, Government of India.

GOVERNMENT OF INDIA COPYRIGHT, 2010.



REG No. - SPG D 10 (Wests and Lakshadweep GDC-1:50,000)

Printed at the Southern Printing Group of Survey of India

Survey of India, Hathi Barkala Estate, Post Box No. 37, Dehra Dun-248001 (Uttarakhand), Department of Science & Technology, Government of India.

GOVERNMENT OF INDIA COPYRIGHT, 2010.