

## Performance

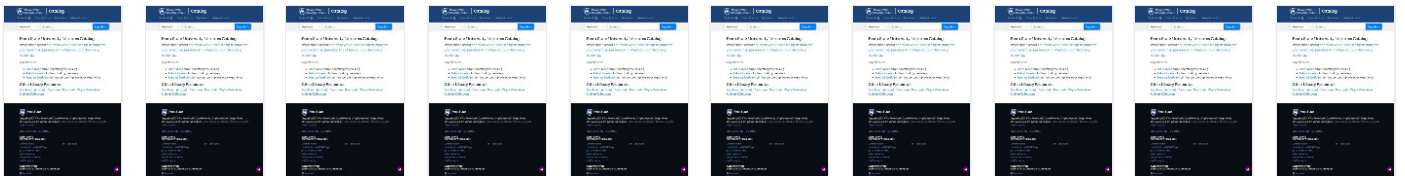
### Metrics



First Contentful Paint	2.6 s	First Meaningful Paint	2.6 s
Speed Index	2.6 s	First CPU Idle	4.7 s
Time to Interactive	4.9 s	Max Potential First Input Delay	160 ms

[View Trace](#)

Values are estimated and may vary. The performance score is based only on these metrics.



**Opportunities** — These suggestions can help your page load faster. They don't directly affect the Performance score.

Opportunity	Estimated Savings
▲ Enable text compression	2.4 s
▲ Eliminate render-blocking resources	1.07 s
▲ Remove unused CSS	1.05 s

**Diagnostics** — More information about the performance of your application. These numbers don't directly affect the Performance score.

▲ Ensure text remains visible during webfont load	▼
---	---

- ▲ **Serve static assets with an efficient cache policy** — 11 resources found
- Minimize Critical Requests Depth — 7 chains found
- Keep request counts low and transfer sizes small — 21 requests • 816 KB
- Passed audits (17)



## Accessibility

These checks highlight opportunities to [improve the accessibility of your web app](#). Only a subset of accessibility issues can be automatically detected so manual testing is also encouraged.

**ARIA** — These are opportunities to improve the usage of ARIA in your application which may enhance the experience for users of assistive technology, like a screen reader.

- ▲ [role] values are not valid
- ▲ [aria-\*] attributes are not valid or misspelled

**Contrast** — These are opportunities to improve the legibility of your content.

- ▲ Background and foreground colors do not have a sufficient contrast ratio.

**Additional items to manually check (11)** — These items address areas which an automated testing tool cannot cover. Learn more in our guide on [conducting an accessibility review](#).

Passed audits (17)

Not applicable (15)



## Best Practices

- ▲ Does not use HTTP/2 for all of its resources — 11 requests not served via HTTP/2

Passed audits (14) ▼

## SEO

These checks ensure that your page is optimized for search engine results ranking. There are additional factors Lighthouse does not check that may affect your search ranking. [Learn more.](#)

**Content Best Practices** — Format your HTML in a way that enables crawlers to better understand your app's content.

▲ Document does not have a meta description ▼

▲ Links do not have descriptive text — 2 links found ▼

**Additional items to manually check (1)** — Run these additional validators on your site to check additional SEO best practices. ▼

Passed audits (8) ▼

Not applicable (3) ▼



## Progressive Web App

These checks validate the aspects of a Progressive Web App. [Learn more.](#)

### Fast and reliable

Page load is fast enough on mobile networks ▼

▲ Current page does not respond with a 200 when offline ▼

▲ start\_url does not respond with a 200 when offline **No usable web app manifest found on page.** ▼

### Installable

Uses HTTPS ▼

▲ Does not register a service worker that controls page and start\_url ▼

▲ Web app manifest does not meet the installability requirements **Failures: No manifest was fetched.** ▼

## PWA Optimized

Redirects HTTP traffic to HTTPS ▼

▲ Is not configured for a custom splash screen **Failures: No manifest was fetched.** ▼

Does not set an address-bar theme color ▼

▲ **Failures: No manifest was fetched, No ``<meta name="theme-color">`` tag found.** ▼

Content is sized correctly for the viewport ▼

Has a `<meta name="viewport">` tag with width or initial-scale ▼

Contains some content when JavaScript is not available ▼

▲ Does not provide a valid `apple-touch-icon` ▼

**Additional items to manually check (3)** — These checks are required by the baseline [PWA Checklist](#) but are not automatically checked by Lighthouse. They do not affect your score but it's important that you verify them manually. ▼

## Runtime Settings

<b>URL</b>	<a href="https://catalog.libraries.psu.edu/">https://catalog.libraries.psu.edu/</a>
<b>Fetch time</b>	Nov 15, 2019, 3:44 PM EST
<b>Device</b>	Emulated Desktop
<b>Network throttling</b>	150 ms TCP RTT, 1,638.4 Kbps throughput (Simulated)
<b>CPU throttling</b>	4x slowdown (Simulated)
<b>User agent (host)</b>	Mozilla/5.0 (Macintosh; Intel Mac OS X 10_14_6) AppleWebKit/537.36 (KHTML, like Gecko) Chrome/78.0.3904.97 Safari/537.36
<b>User agent (network)</b>	Mozilla/5.0 (Macintosh; Intel Mac OS X 10_13_6) AppleWebKit/537.36 (KHTML, like Gecko) Chrome/74.0.3694.0 Safari/537.36 Chrome-Lighthouse
<b>CPU/Memory Power</b>	1544

Generated by **Lighthouse** 5.2.0 | [File an issue](#)